

CATTLE DRIVE VIDEO MARKET

LAMB AND CALF SPECTACULAR

PRESENTED BY CATTLE DRIVE
VIDEO MARKET AND ZOETIS



August 20, 2025

**Little America
500 S Main St
Salt Lake City, UT**

1:00PM MST

Bid Online at cattleusa.com

Bid Line (844) 770-0786

cattledrivevideo.com



LAMB LOTS

WEDNESDAY AUGUST 20 1:00PM MST

Lot	State	Consigner	Hd	Descript.	Weight	Delivery	Rep
5451	UT	WILL TALBOT	500	LAMBS	80	9/25/25-10/10/25	WAYNE COWLEY
5452	UT	WILL TALBOT	500	LAMBS	80	9/15/25-10/1/25	WAYNE COWLEY
5453	WY	CHILD RANCH, LLC	500	LAMBS	85	9/30/25-10/7/25	CLINT WARD
5454	WY	CHILD RANCH, LLC	500	LAMBS	85	9/30/25-10/7/25	CLINT WARD
5455	UT	THOUSAND PEAKS RANCHES, INC.	500	LAMBS	92	10/1/25-10/7/25	WAYNE COWLEY
5456	UT	THOUSAND PEAKS RANCHES, INC.	500	LAMBS	92	10/1/25-10/7/25	WAYNE COWLEY
5457	UT	THOUSAND PEAKS RANCHES, INC.	500	LAMBS	92	10/1/25-10/7/25	WAYNE COWLEY
5458	UT	THOUSAND PEAKS RANCHES, INC.	500	LAMBS	92	10/1/25-10/7/25	WAYNE COWLEY
5459	UT	THOUSAND PEAKS RANCHES, INC.	500	LAMBS	92	10/1/25-10/7/25	WAYNE COWLEY
5460	UT	THOUSAND PEAKS RANCHES, INC.	500	LAMBS	92	10/1/25-10/7/25	WAYNE COWLEY
5461	UT	THOUSAND PEAKS RANCHES, INC.	500	LAMBS	92	10/1/25-10/7/25	WAYNE COWLEY
5462	UT	ALLEN OLSEN	500	LAMBS	92	9/25/25-10/10/25	WAYNE COWLEY
5463	UT	ALLAN OLSEN	970	LAMBS	98	9/25/25-10/10/25	WAYNE COWLEY
5464	UT	BRB LIVESTOCK/BRIAN BITNER	550	LAMBS	85	9/17/25-9/28/25	CLINT WARD
5465	UT	BRB LIVESTOCK/BRIAN BITNER	510	LAMBS	92	9/17/25-9/28/25	CLINT WARD
5466	UT	BRB LIVESTOCK/BRIAN BITNER	475	LAMBS	98	9/17/25-9/28/25	CLINT WARD
5467	UT	BRB LIVESTOCK/BRIAN BITNER	475	LAMBS	98	9/17/25-9/28/25	CLINT WARD
5468	UT	BRB LIVESTOCK/BRIAN BITNER	465	LAMBS	99	9/17/25-9/28/25	CLINT WARD
5469	UT	BRB LIVESTOCK/BRIAN BITNER	450	LAMBS	103	9/17/25-9/28/25	CLINT WARD
5470	UT	BRB LIVESTOCK/BRIAN BITNER	450	LAMBS	103	9/17/25-9/28/25	CLINT WARD
5471	UT	BRB LIVESTOCK/BRIAN BITNER	440	LAMBS	106	9/17/25-9/28/25	CLINT WARD
5472	UT	BRB LIVESTOCK/BRIAN BITNER	440	LAMBS	106	9/17/25-9/28/25	CLINT WARD
5473	UT	BRB LIVESTOCK/BRIAN BITNER	440	LAMBS	106	9/17/25-9/28/25	CLINT WARD
5474	UT	BRB LIVESTOCK/BRIAN BITNER	425	LAMBS	110	9/17/25-9/28/25	CLINT WARD
5475	UT	BRB LIVESTOCK/BRIAN BITNER	425	LAMBS	110	9/17/25-9/28/25	CLINT WARD
5476	UT	BRB LIVESTOCK/BRIAN BITNER	425	LAMBS	110	9/17/25-9/28/25	CLINT WARD
5476A	UT	CHASEN WALL	400	WETHER	95	9/2/25-9/6/25	CORT JENSEN
5476B	UT	KARL LUND	900	WETHER	95	9/15/25-9/22/25	CORT JENSEN
5477	UT	KARL PECKHAM	475	LAMBS	95	9/20/25-10/5/25	WAYNE COWLEY
5478	UT	ROGER BRIAN	800	LAMBS	95	9/25/25-10/5/25	WAYNE COWLEY
5479	UT	JOHN MICKELSEN	850	LAMBS	97	9/15/25-10/1/25	WAYNE COWLEY
5480	UT	EPH JENSEN LIVESTOCK, LLC	510	LAMBS	100	9/25/25-10/5/25	CLINT WARD
5481	UT	EPH JENSEN LIVESTOCK, LLC	510	LAMBS	100	9/25/25-10/5/25	CLINT WARD
5482	UT	EPH JENSEN LIVESTOCK, LLC	510	LAMBS	100	9/25/25-10/5/25	CLINT WARD
5483	UT	EPH JENSEN LIVESTOCK, LLC	510	LAMBS	100	9/25/25-10/5/25	CLINT WARD
5484	UT	DUSTY ALLRED	500	LAMBS	100	9/15/25-10/1/25	WAYNE COWLEY
5485	UT	DUSTY ALLRED	475	LAMBS	105	9/20/25-10/1/25	WAYNE COWLEY
5486	UT	OKELBERRY RANCH LLC	390	MIXED GROUP	128	9/13/25-9/25/25	WAYNE COWLEY

VIEW FULL CATALOG AND VIDEOS AT CATTLEDRIVEVIDEO.COM
BID ONLINE AT CATTLEUSA.COM • BID LINE (844) 779-0786

Brief Summary of full Prescribing Information.

VALCOR™

(doramectin and levamisole injection)

(5 mg/mL doramectin, 150 mg/mL levamisole hydrochloride)

CAUTION: Federal law restricts this drug to use by or on the order of a licensed veterinarian.

INDICATIONS:

VALCOR™ is indicated for the treatment and control of the following species of parasites in beef cattle two months of age and older and in replacement dairy heifers less than 20 months of age. Not for use in beef bulls intended for breeding over 1 year of age, dairy calves, and veal calves.

Gastrointestinal Roundworms (adults and fourth stage larvae): *Ostertagia ostertagi* (including inhibited larvae), *O. lyrata*, *Haemonchus placei*, *Trichostrongylus axei*, *T. colubriformis*, *T. longispicularis**, *Cooperia oncophora*, *C. pectinata**, *C. punctata*, *C. sumatrensis*, *Bunostomum phlebotomum**, *Strongylus edentatus**, *Oesophagostomum radiatum*, *Trichostrongylus axei* spp.*, *Nematodirus helvetianus**, Lungworms (adults and fourth stage larvae): *Dictyocaulus viviparus*. Eyeworms (adults): *Thelazia* spp. Grubs (parasitic stages): *Hypoderma bovis*, *H. lineatum*. Sucking Lice: *Haematopinus eurysternus*, *Linognathus setosus*, *Solenopotes capillatus*. Mange Mites: *Psoroptes bovis*, *Sarcoptes scabiei*. *Adults only

WARNINGS AND PRECAUTIONS:

WITHDRAWAL PERIODS AND RESIDUE WARNINGS:

Cattle must not be slaughtered for human consumption within 15 days following last treatment with this drug product. Not for use in female dairy cattle 20 months of age or older including dry dairy cows; use in these cattle may cause drug residues in milk and/or in calves born to these cows or heifers. Not for use in beef calves less than 2 months of age, dairy calves, and veal calves. A withdrawal period has not been established for this product in pre-ruminating calves.

User Safety Warnings:

Not for human use. Keep out of reach of children. If accidental eye contact occurs, flush eyes immediately with water for 15 minutes and seek medical attention. If wearing contact lenses, flush eyes immediately with water before removing lenses then continue rinsing for at least 15 minutes. Do not eat, drink or smoke while handling the product. Wash hands after use. Take care to avoid accidental self-injection. If a accidental injection occurs, seek medical attention and provide product package insert to medical professional. To obtain a Safety Data Sheet(s), contact Zoetis Inc. at 1-888-963-8471 or www.zoetis.com.

Animal Safety Warnings and Precautions:

Use of levamisole in cattle treated in the last few days with cholinesterase inhibitors such as organophosphates or with morantel may enhance the toxic effects of levamisole. Use together with caution.

Destruction of *Hypoderma* larvae (cattle grub) at the period when these grubs are in vital areas may cause undesirable host-parasite reactions including the possibility of fatalities. Killing *H. lineatum* when it is in the tissue surrounding the gutlet may cause blast, killing *H. bovis* when it is in the vertebral canal may cause stag-ging or paralysis. These reactions are not specific to treatment with VALCOR™ and can occur with any successful treatment of grubs. Cattle should be treated either before or after these stages of grub development. Consult your veterinarian concerning the proper time for treatment. Follow recommended dosage carefully. Reproductive safety has not been evaluated in bulls intended for breeding.

ADVERSE REACTIONS:

This product is likely to cause swelling at the injection site. Tissue damage at the injection site may also occur, including possible granulomas and necrosis. These reactions have resolved without treatment. Local tissue reaction may result in trim loss of edible tissue at slaughter. A single death attributed to clostridial infection associated with the injection of VALCOR™ was reported in a non-pivotal effectiveness study. Observe cattle for injection site reactions. If injection site reactions are suspected, consult your veterinarian. This product is not for intravenous or intramuscular use. Hypersalivation may be observed; however this reaction will disappear within a few hours. If this condition persists, a veterinarian should be consulted.

Contact Information:

Contact Zoetis Inc. at 1-888-963-8471 or www.zoetis.com. To report suspected adverse drug experiences, contact Zoetis Inc. at 1-888-963-8471. For additional information about reporting adverse drug experiences for animal drugs, contact FDA at 1-888-FDA-VETS or <http://www.fda.gov/medwatch>.

TARGET ANIMAL SAFETY:

Margin of Safety: Subcutaneous administration of VALCOR™ was well tolerated in calves as young as 3 months of age at 1, 2, or 3 times the recommended dose. Dose-dependent post-dose hypersalivation was seen in all treated groups compared to the controls. All cases of hypersalivation were mild, transient, and resolved without further medical intervention. Dose-related injection site reactions were observed, and those in the 1X group resolved between 21 and 28 days post injection. Injection site reactions were primarily swelling which resolved between 21 and 28 days post injection. Findings from the injection sites included swelling, edema, inflammation, muscle necrosis and fibrosis.

Female Reproductive Safety: The reproductive safety of VALCOR™ was established in two studies with female cattle. First, a single dose of VALCOR™ was administered subcutaneously at 3 times the recommended dose at times coinciding with folliculogenesis, implantation, or organogenesis, and had no effects on conception, calving, abortion, and stillbirth rates, and post-natal viability up to 30±2 days post-calving. There were no congenital abnormalities. The only test article-related change was an increase in incidence and duration of swelling at injection sites compared with control, but all swellings eventually resolved. In a second study, a single dose of VALCOR™ administered subcutaneously at 3 times the recommended dose at either early or late gestation had no effects on calving, abortion, and stillbirth rates, and post-natal viability up to 30±2 days post-calving. One control calf and two treated calves were born with congenital abnormalities and did not survive. These were not determined to be test article-related. The only test article-related change was an increase in incidence and duration of swelling at injection sites, but all swellings eventually resolved. Not for use in bulls intended for breeding over 1 year of age, as reproductive safety has not been evaluated.

HOW SUPPLIED:

VALCOR™ is available in 100 mL, 250 mL and 500 mL multi-dose, rubber-capped glass vials.

STORAGE, HANDLING, AND DISPOSAL:

Store below 25°C (77°F). Do not expose to light for extended periods of time. Do not contaminate water by direct application or by improper disposal of drug containers. Dispose of containers in a approved landfill or by incineration.

Approved by FDA under NADA #141-553

zoetis

Distributed by:
Zoetis Inc.
Kalamazoo, MI 49007

June 2022

40031685A&P

TOUGH ON TOUGH WORMS, EASY ON YOU.

You can achieve effective parasite control in one product, where before you may have needed two. Valcor (doramectin and levamisole injection) is the first prescription cattle dewormer with two active ingredients in one dose. It's never been easier to be tough. Get tough at ValcorTough.com.

VALCOR®
(doramectin and levamisole injection)



IMPORTANT SAFETY INFORMATION: Do not treat cattle with Valcor within 15 days of slaughter. Not for use in female dairy cattle 20 months of age or older, including dry dairy cows; not for use in beef calves less than 2 months of age, dairy calves, and veal calves. Safety has not been evaluated in breeding bulls. Use with caution in cattle treated with cholinesterase inhibitors. This product is likely to cause injection site swelling; tissue damage (including granulomas and necrosis) may occur. These reactions have resolved without treatment. See brief summary of Prescribing Information attached.

All trademarks are the property of Zoetis Services LLC or a related company or a licensor unless otherwise noted. © 2024 Zoetis Services LLC. All rights reserved. VLC-00027R1

zoetis

J&T EXPRESS INC

Backed by over 40 years in the business, J&T Express Inc is a family-run operation that understands livestock and the folks who raise them. Whether you're moving cattle, hogs, or sheep – across town or across state lines – we've got the equipment, the team and the know-how to get it done right.

Smoke Behrens | 712-790-3359

www.behrensandco.com



Hauling livestock since 1982



UTAH FARM BUREAU FEDERATION

We are Utah's largest voluntary organization of farmers and ranchers, committed to protecting Utah's farms and ranches, and ensuring a safe, fresh, and locally grown food supply.

**JOIN US AND
CONNECT TO THE MIRACLE OF AGRICULTURE!**



WWW.UTAHFARMBUREAU.ORG/JOIN



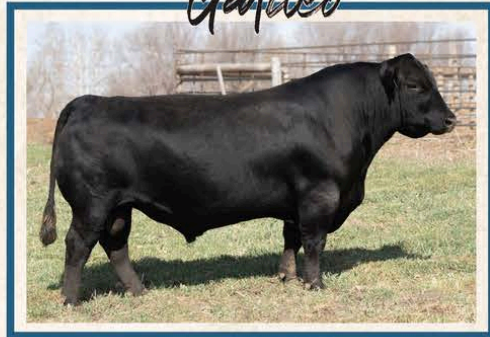
14th Annual LYMAN LIVESTOCK BULL SALE

REFERENCE SIRE

GW *Medicine Man* 200K



HOOK'S *Galileo* 210G



ASR *American Proud* H0301



KBHR *Global* J138



1:00 PM MT | PRODUCERS LIVESTOCK MARKET
SALINA, UTAH

FEBRUARY 28

PAP Tested **100** Bulls Sell

SIMMENTAL • SIMANGUS™ • ANGUS

- PAP tested at 6,300' elevation
- Breeding Soundness Exam and Semen Tested
- "Cattlemen to Cattlemen" guarantee
- Bulls raised by BLM range-calved cows on the 6,500' Utah high
- Developed to go to work in rugged country

Bid Live Online
DVAuction
Broadcasting Real-Time Auctions

Marty Ropp 406-581-7835
Corey Wilkins 256-590-2487
Jared Murnin 406-321-1542

alliedgeneticresources.com

ALLIED
GENETIC RESOURCES

LYMAN LIVESTOCK

Eric Lyman 801-310-1570 | Kevin Lyman 801-376-5774
Mike Lyman 801-404-0587 | Clay Lyman 801-369-5164
www.LYMANLIVESTOCK.com



Ryan Trapp: (435) 452-8551
ryan@westerntireotr.com

Tremonton, UT

Strong, weather-resistant, and designed to last.
We have tire water troughs from 5 feet to 13
feet in stock and will deliver full semi loads.

At Western AgCredit,
Agriculture is more
than a department,
it is who we are.



Whether you need to finance **real estate, equipment,** or
operating expenses, Western AgCredit has an option for you.
Work with a lender that knows about agriculture!


WESTERN
AgCredit
westernagcredit.com



Trace mineral injection that provides
zinc, copper, manganese, and selenium

Lactipro[®]

Probiotic that stabilizes rumen pH
and promotes healthy rumen function

Matt Storlie | mstorlie@axiota.com | (208) 215-0337

FAMILY OWNED & OPERATED SINCE 1996



**CIRCLE F FARMS
HOOPER, UT**

Serving all your big bale hay
needs. Buy, sell, & haul. Contact
us for more information.



Rulon 801-698-0523

Nate 801-698-7968

Kai 801-645-8394

THE NEXT GENERATION OF LIVESTOCK PRODS IS HERE! THE HORNET 2600

- ✓ USB RECHARGEABLE
- ✓ WATER-RESISTANT
- ✓ LIGHTWEIGHT
- ✓ DURABLE
- ✓ RUBBER OVERMOLDED



HerculesAG.com **806-340-7664**

DISCOUNT CODE: CATTLE10



Prime them for the dry lot.

There's a **NEW** implant for that. **Synovex[®] Primer[™]**



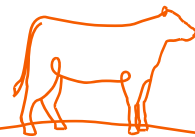
Prime weight. Prime precision.
Start with a dialed-in combination trenbolone acetate (TBA)/estradiol benzoate implant.

Starting with a combination TBA/estradiol benzoate implant can help produce more pounds, extend your growth curve and keep cattle leaner longer, helping you add value to your cattle.¹

Synovex[®] Primer[™] makes it easy and comes with Zoetis' decades of service and experience in working with operations just like yours. Contact your Zoetis sales representative or visit [Zoetis.com](https://zoetis.com) to learn more.



Compatible with Exact 10[®]
and The Revolver applicators.



Synovex Primer contains 50 mg trenbolone acetate and 7 mg estradiol benzoate.

Refer to individual labels for complete directions for use, precautions, and warnings.
Reimplant only if and as directed in labeling.

¹Smerchek DT, Smith ZK. Effects of increasing doses of trenbolone acetate and estradiol on finishing phase growth performance, carcass trait responses, and serum metabolites in beef steers following implantation. *Transl Anim Sci.* 2020;4(3):1-8.

J&T EXPRESS INC

Hauling livestock since 1982

Backed by over 40 years in the business, J&T Express Inc is a family-run operation that understands livestock and the folks who raise them. Whether you're moving cattle, hogs, or sheep – across town or across state lines – we've got the equipment, the team and the know-how to get it done right.



COAST TO COAST LIVESTOCK TRANSPORTATION



712-790-3359

WWW.BEHRENSANDCO.COM



NaturSafe

AVAILA 4



KEEP 'EM GROWING.

Vitalix tubs are formulated with superior ingredients specifically designed to provide effective results in all stages of production.

Learn more from your local sales manager today!
Owen Albrecht • 385-335-1745 • oalbrecht@vitalix.com



WHOA.

MORE POUNDS.

MORE CALVES. MORE PROFIT.

Herefords are known as the efficiency experts for a reason.

Herefords boost pregnancy rates by 7% and add \$30 per head in feedyard profitability in a crossbreeding system.

And Hereford genetics bring unrivaled hybrid vigor, longevity and disposition.

COME HOME TO HEREFORD.



Hereford.org | 816-842-3757



WRAITH · SCARLETT & RANDOLPH
Insurance
Services, Inc.
W·S·R
ESTD 1917

INSURANCE FOR FARMERS & RANCHERS

Farmers and ranchers face unique risks, from unpredictable weather to market fluctuations.

Insurance provides essential protection, covering crops, livestock, equipment, and property against losses.



Livestock Risk Protection (LRP)
insures against declining market prices. LRP is available year round and allows you to choose from a variety of coverage levels and insurance periods to match the time you market your livestock.

LRP



Pasture, Rangeland, and Forage (PRF) helps manage risk associated with **lack of precipitation.** PRF insurance allows you to select from a variety of coverage levels and insurance periods to customize a plan that fits your operation.

PRF



Craig Harrison

Insurance Agent

☎ (707) 738-0684
✉ charrison@wsrins.com



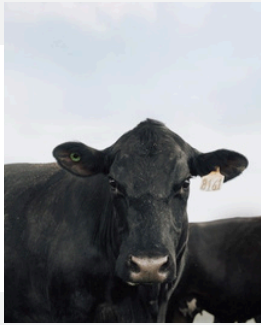
Cody Alvernaz

Insurance Agent

☎ (530) 635-1775
✉ codya@wsrins.com

Where Food Comes From

CARE Certified



Animal
Care



Environmental
Stewardship



People &
Community



CARE Certified supports animal protein producers by verifying ethical and sustainable farming practices. The program focuses on humane animal care, responsible resource management and strengthening community ties, helping align with consumer demand for regenerative production practices while fostering long-term sustainability.

**Responsible Practices.
Sustainable Futures.**

Up to \$90 Premium

CARE Certified cattle can earn up to \$90 more per head.

71% of Consumers

Say they are willing to pay more for CARE Certified meat products.

wfcfcare.com



Sustainably Raised From The Heart



Shaped By Producers, For Producers

The CARE Certified Standard was developed with direct input from cattle producers, ensuring it addresses the real challenges and needs of the industry. By listening to cattlemen, CARE Certified provides a tailored solution for sustainable ranching practices, recognizing producers for their hard work while supporting the need to create a lasting legacy for future generations.

EOY 2024 Results



1,414,834
Head of Cattle



1,219
Locations



35
States



56,826,400
Grazing Acres

Join the CARE Movement Today!



Rooted in Trust

Where Food Comes From, Inc. fosters authenticity in food production by elevating systems and adding value to the people behind them. Through certification and verification, we connect consumers to foods that reflect their ideals.



A Legacy of Trust
and Integrity
SINCE 1995



Where Food Comes From

866.395.5883 | info@wherefoodcomesfrom.com | imiglobal.com | wherefoodcomesfrom.com

Rafter C Livestock Transportation, Inc.
509-760-3794



Ellensburg, WA. 98926

Nationwide Livestock Hauling
Over 30 Years of Experience

stacy@rafterc.co





NORTHERN
— FEED & BEAN —



Bob Pemberton - Feed Manager (970) 302-0066 bob@nfbean.com

Nate Lucas - Production Specialist (719) 246-0772 nathan@nfbean.com

Austin Reitzenstein - Production Specialist (970) 324-3344

austin@nfbean.com

Brett Berry - Cheyenne Sales Rep (307) 421-6811



JONAH BANK[®]
OF WYOMING
Building a Better Wyoming

*Take Pride
in Your Work*



Member
FDIC



JBW NMLS #313969

www.jonah.bank

A HEARTFELT THANK YOU TO OUR INCREDIBLE SPONSORS FOR THEIR UNWAVERING SUPPORT! WE ARE PROUD TO STAND ALONGSIDE SUCH OUTSTANDING BUSINESSES THAT MAKE A LASTING IMPACT IN OUR INDUSTRY. WE ENCOURAGE ALL OF OUR PATRONS TO SUPPORT THESE PARTNERS WHENEVER POSSIBLE.

FROM ALL OF US AT PRODUCERS LIVESTOCK AND CATTLE DRIVE VIDEO MARKET — THANK YOU FOR HELPING MAKE WHAT WE DO POSSIBLE.



LOT: 5451	WILL TALBOT	Deliver 9/25/2025 -10/10/2025
500 Lambs Base Weight: 80		Slide Type: 2-way
Location: 40 mi S of Salina, Utah		Weight Stop: 7lb
Color: 100% White Faced	Origin: Home Raised	Slide Amount: .80
Breed: Rambouillet, Merino	Variance: Slightly Uneven	Frame: Medium
Bangs: No	Implants: No N/A	Flesh: Medium
Feed: Hay Stubble		Shrink: 0%
Days Weaned: 14		Heifers Sell Back of Steers:
Vaccinations: CD/T, LA-200		
Weigh Info: Gather in corral night before delivery, early morning load on truck, haul 40 mi, weigh on truck, 0% shrink		
Weigh On: Truck		
Comments: This is a strong set of weaned lambs that have been on hay stubble for 2 weeks. Weaned 14 days. Will make a freight adj or finish out with lambs from the sale barn		
Rep: Wayne Cowley 435-979-3725		
Option on Next Lot		

LOT: 5452	WILL TALBOT	Deliver 9/15/2025 -10/01/2025
500 Lambs Base Weight: 80		Slide Type: 2-way
Location: 40 mi S of Salina, Utah		Weight Stop: 7lb
Color: 100% White Faced	Origin: Home Raised	Slide Amount: .80
Breed: Rambouillet, Merino	Variance: Slightly Uneven	Frame: Medium
Bangs: No	Implants: No N/A	Flesh: Medium
Feed: Hay Stubble		Shrink: 0%
Days Weaned: 14		Heifers Sell Back of Steers:
Vaccinations: CD/T, LA-200		
Weigh Info: Gather in corral night before delivery, early morning load on truck, haul 40 mi, weigh on truck, 0% shrink		
Weigh On: Truck		
Comments: This is a strong set of weaned lambs that have been on hay stubble for 2 weeks. Weaned 14 days. Will make a freight adj or finish out with lambs from the sale barn		
Rep: Wayne Cowley 435-979-3725		

LOT: 5453	CHILD RANCH, LLC	Deliver 09/30/2025 -10/07/2025
500 Lambs Base Weight: 85		Slide Type: 2-way
Location: Kemmerer, WY; 90 mi W of Rock Springs, WY		Weight Stop: 7lb
Color: 70% WF, 30% Smut	Origin: Home Raised	Slide Amount: 1.00
Breed: Targhee, Targhee X	Variance: Slightly Uneven	Frame: Medium
Bangs: No	Implants: No N/A	Flesh: Medium
Feed: On ewe on native high elevation mountain range.		Shrink: 0%
Days Weaned: N/A		Heifers Sell Back of Steers:
Vaccinations: CD&T @ Docking		
Weigh Info: Corralled afternoon before, sorted from ewes, overnight stand in corral, load on trucks early AM, weigh on trucks after 5 mile haul		
Weigh On: Truck		
Comments: Really nice set of reputation ranch raised, high elevation, western Wyoming range born lambs. High gaining and healthy lambs. Smaller end and peewees will not be shipped.		
Rep: Clint Ward (435) 760-6251		
Option on Next Lot		

LOT: 5454	CHILD RANCH, LLC	Deliver 09/30/2025 -10/07/2025
500 Lambs Base Weight: 85		Slide Type: 2-way
Location: Kemmerer, WY; 90 mi W of Rock Springs, WY		Weight Stop: 7lb
Color: 70% WF, 30% Smut	Origin: Home Raised	Slide Amount: 1.00
Breed: Targhee, Targhee X	Variance: Slightly Uneven	Frame: Medium
Bangs: No	Implants: No N/A	Flesh: Medium
Feed: On ewe on native high elevation mountain range - Western Wyoming		Shrink: 0%
Days Weaned: N/A		Heifers Sell Back of Steers:
Vaccinations: CD&T @ Docking		
Weigh Info: Corralled afternoon before, sorted from ewes, overnight stand in corral, load on trucks early AM, weigh on trucks after 5 mile haul		
Weigh On: Truck		
Comments: Really nice set of reputation ranch raised, high elevation, western Wyoming range born lambs. High gaining and healthy lambs. Smaller end and peewees will not be shipped.		
Rep: Clint Ward (435) 760-6251		

LOT: 5455	THOUSAND PEAKS RANCHES, INC.	Deliver 10/01/2025 -10/07/2025
500 Lambs Base Weight: 92		Slide Type: 2-way
Location: 12 Miles E of Oakley, UT or 45 miles E of Salt Lake		Weight Stop: 7lb
Color: 80% Smut balance white face	Origin: Home Raised	Slide Amount: .80
Breed: Rambouillet/Suffolk	Variance: Slightly Uneven	Frame: Medium
Bangs: No	Implants: No N/A	Flesh: Medium
Feed: High Mountain Pasture all natural		Shrink: N/A
Days Weaned: N/A		Heifers Sell Back of Steers:
Vaccinations: Covexin 8, sore mouth		
Weigh Info: Stand overnight in corral, weigh on ground		
Weigh On: Ground		
Comments: A strong set of reputation lambs from historic ranch. Run in the high mountains of Northern Utah.		
Rep: Wayne Cowley - 435-979-3725		
Option on Next Lot		

LOT: 5456	THOUSAND PEAKS RANCHES, INC.	Deliver 10/01/2025 -10/07/2025
500 Lambs Base Weight: 92		Slide Type: 2-way
Location: 12 Miles E of Oakley, UT or 45 miles E of Salt Lake		Weight Stop: 7lb
Color: 80% Smut balance white face	Origin: Home Raised	Slide Amount: .80
Breed: Rambouillet/Suffolk	Variance: Slightly Uneven	Frame: Medium
Bangs: No	Implants: No N/A	Flesh: Medium
Feed: High Mountain Pasture all natural		Shrink: N/A
Days Weaned: N/A		Heifers Sell Back of Steers:
Vaccinations: Covexin 8, sore mouth		
Weigh Info: Stand overnight in corral, weigh on ground		
Weigh On: Ground		
Comments: A strong set of reputation lambs from historic ranch. Run in the high mountains of Northern Utah.		
Rep: Wayne Cowley - 435-979-3725		
Option on Next Lot		

LOT: 5457	THOUSAND PEAKS RANCHES, INC.	Deliver 10/01/2025 -10/07/2025
500 Lambs Base Weight: 92		Slide Type: 2-way
Location: 12 Miles E of Oakley, UT or 45 miles E of Salt Lake		Weight Stop: 7lb
Color: 80% Smut balance white face	Origin: Home Raised	Slide Amount: .80
Breed: Rambouillet/Suffolk	Variance: Slightly Uneven	Frame: Medium
Bangs: No	Implants: No N/A	Flesh: Medium
Feed: High Mountain Pasture all natural		Shrink: N/A
Days Weaned: N/A		Heifers Sell Back of Steers:
Vaccinations: Covexin 8, sore mouth		
Weigh Info: Stand overnight in corral, weigh on ground		
Weigh On: Ground		
Comments: A strong set of reputation lambs from historic ranch. Run in the high mountains of Northern Utah.		
Rep: Wayne Cowley - 435-979-3725		
Option on Next Lot		

LOT: 5458	THOUSAND PEAKS RANCHES, INC.	Deliver 10/01/2025 -10/07/2025
500 Lambs Base Weight: 92		Slide Type: 2-way
Location: 12 Miles E of Oakley, UT or 45 miles E of Salt Lake		Weight Stop: 7lb
Color: 80% Smut balance white face	Origin: Home Raised	Slide Amount: .80
Breed: Rambouillet/Suffolk	Variance: Slightly Uneven	Frame: Medium
Bangs: No	Implants: No N/A	Flesh: Medium
Feed: High Mountain Pasture all natural		Shrink: N/A
Days Weaned: N/A		Heifers Sell Back of Steers:
Vaccinations: Covexin 8, sore mouth		
Weigh Info: Stand overnight in corral, weigh on ground		
Weigh On: Ground		
Comments: A strong set of reputation lambs from historic ranch. Run in the high mountains of Northern Utah.		
Rep: Wayne Cowley - 435-979-3725		
Option on Next Lot		

LOT: 5459	THOUSAND PEAKS RANCHES, INC.	Deliver 10/01/2025 -10/07/2025
500 Lambs Base Weight: 92		Slide Type: 2-way
Location: 12 Miles E of Oakley, UT or 45 miles E of Salt Lake		Weight Stop: 7lb
Color: 80% Smut balance white face	Origin: Home Raised	Slide Amount: .80
Breed: Rambouillet/Suffolk	Variance: Slightly Uneven	Frame: Medium
Bangs: No	Implants: No N/A	Flesh: Medium
Feed: High Mountain Pasture all natural		Shrink: N/A
Days Weaned: N/A		Heifers Sell Back of Steers:
Vaccinations: Covexin 8, sore mouth		
Weigh Info: Stand overnight in corral, weigh on ground		
Weigh On: Ground		
Comments: A strong set of reputation lambs from historic ranch. Run in the high mountains of Northern Utah.		
Rep: Wayne Cowley - 435-979-3725		
Option on Next Lot		

LOT: 5460	THOUSAND PEAKS RANCHES, INC.	Deliver 10/01/2025 -10/07/2025
500 Lambs Base Weight: 92		Slide Type: 2-way
Location: 12 Miles E of Oakley, UT or 45 miles E of Salt Lake		Weight Stop: 7lb
Color: 80% Smut balance white face	Origin: Home Raised	Slide Amount: .80
Breed: Rambouillet/Suffolk	Variance: Slightly Uneven	Frame: Medium
Bangs: No	Implants: No N/A	Flesh: Medium
Feed: High Mountain Pasture all natural		Shrink: N/A
Days Weaned: N/A		Heifers Sell Back of Steers:
Vaccinations: Covexin 8, sore mouth		
Weigh Info: Stand overnight in corral, weigh on ground		
Weigh On: Ground		
Comments: A strong set of reputation lambs from historic ranch. Run in the high mountains of Northern Utah.		
Rep: Wayne Cowley - 435-979-3725		
Option on Next Lot		

LOT: 5461	THOUSAND PEAKS RANCHES, INC.	Deliver 10/01/2025 -10/07/2025
500 Lambs Base Weight: 92		Slide Type: 2-way
Location: 12 Miles E of Oakley, UT or 45 miles E of Salt Lake		Weight Stop: 7lb
Color: 80% Smut balance white face	Origin: Home Raised	Slide Amount: .80
Breed: Rambouillet/Suffolk	Variance: Slightly Uneven	Frame: Medium
Bangs: No	Implants: No N/A	Flesh: Medium
Feed: High Mountain Pasture all natural		Shrink: N/A
Days Weaned: N/A		Heifers Sell Back of Steers:
Vaccinations: Covexin 8, sore mouth		
Weigh Info: Stand overnight in corral, weigh on ground		
Weigh On: Ground		
Comments: A strong set of reputation lambs from historic ranch. Run in the high mountains of Northern Utah.		
Rep: Wayne Cowley - 435-979-3725		

LOT: 5462	ALLEN OLSEN	Deliver 9/25/2025 -10/10/2025
500 Lambs Base Weight: 92		Slide Type: 2-way
Location: Fountain Green, Utah 60 miles north of Salina, Ut		Weight Stop: 7lb
Color: white face	Origin: Home Raised	Slide Amount: .80
Breed: Rambouillet	Variance: Medium Uneven	Frame: Medium
Bangs: No	Implants: No N/A	Flesh: Medium
Feed: on pasture on ewe		Shrink: 0%
Days Weaned: 14		Heifers Sell Back of Steers:
Vaccinations:		
Weigh Info: dry lot over night sort off ewe @ day light load on truck haul 10 miles weigh on truck 0% shrink		
Weigh On: Truck		
Comments: nice set of weaned all whit face lambs good delivery date		
Rep: Wayne Cowley 435-979-3725		

LOT: 5463	ALLAN OLSEN	Deliver 9/25/2025 -10/10/2025
970 Lambs Base Weight: 98		Slide Type: 2-way
Location: 70 miles north east of Salina, Ut		Weight Stop: 7lb
Color: mostly smutt very few white	Origin:	Slide Amount: .80
Breed: Rambouillet, Suffolk	Variance: Medium Uneven	Frame: Medium
Bangs: No	Implants: No N/A	Flesh: Medium
Feed: native pasture on ewe		Shrink: N/A
Days Weaned: N/A		Heifers Sell Back of Steers:
Vaccinations:		
Weigh Info: sort off ewe @ daylight load on truck haul 25 mile weigh on truck 0%		
Weigh On: Truck		
Comments: This is a really nice set of strong set strong Xbrd lambs mostly smutt face very few white with excellent weigh conditions		
Rep: Wayne Cowley 435-979-3725		

LOT: 5476A	CHASEN WALL	Deliver 9/02/2025 -9/06/2025
400 Wether Base Weight: 95		Slide Type: 2-way
Location: Vernal, Utah plus 15		Weight Stop:
Color: 75% Smut balance white face	Origin: Home Raised	Slide Amount: 1.00
Breed: Merino ewes, Hamp suffolk bucks	Variance: Medium Uneven	Frame: Medium
Bangs: No	Implants: No N/A	Flesh: Medium
Feed: On ewe Native grass		Shrink: 0%
Days Weaned: N/A		Heifers Sell Back of Steers:
Vaccinations:		
Weigh Info: Over night stand in corral sort off ewe @ daylight weigh on truck straight		
Weigh On: Truck		
Comments: Nice set of lambs run in eastern Utah, will make freight adjustment if necessary		
Rep: Cort Jensen 435-820-4454		

LOT: 5476B	KARL LUND	Deliver 9/15/2025 -9/22/2025
900 Wether Base Weight: 95		Slide Type: 2-way
Location: Ephraim, Utah plus 20		Weight Stop:
Color: 50% Smut balance & white face	Origin: Home Raised	Slide Amount: 1.00
Breed: Rambouillet ewes, Suffolk,	Variance: Medium Uneven	Frame: Medium
Bangs: No	Implants: No N/A	Flesh: Medium
Feed: On ewe Native grass		Shrink: 0%
Days Weaned: N/A		Heifers Sell Back of Steers:
Vaccinations: 7 - way & Sore Mouth @ docking		
Weigh Info: Over night stand in corral sort off ewe @ daylight weigh on ground straight		
Weigh On: Ground		
Comments: Nice set of lambs run high elevation in central Utah.		
Rep: Cort Jensen 435-820-4454		

LOT: 5477	KARL PECKHAM	Deliver 9/20/2025 -10/05/2025
475 Lambs Base Weight: 95		Slide Type: 2-way
Location: Spanish fork, Utah plus 20 miles		Weight Stop: 7lb
Color: Mostly white face few smut	Origin: Home Raised	Slide Amount: .80
Breed: Rambouillet, Columbia, Suffolk	Variance: Medium Uneven	Frame: Medium
Bangs: No	Implants: No N/A	Flesh: Medium
Feed: On ewe Native grass		Shrink: 0%
Days Weaned: N/A		Heifers Sell Back of Steers:
Vaccinations: CD&T @ Docking		
Weigh Info: Over night stand in corral sort off ewe @ daylight weigh on ground straight.		
Weigh On: Ground		
Comments: This is really nice set of lambs run @ High elevation		
Rep: Wayne Cowley 435-979-3725		

LOT: 5478	ROGER BRIAN	Deliver 9/25/2025 -10/05/2025
800 Lambs Base Weight: 95		Slide Type: 2-way
Location: Loa, Utah plus 10		Weight Stop: 7lb
Color: Mostly white face few smut	Origin: Home Raised	Slide Amount: .80
Breed: Rambouillet, Columbi, Suffolk	Variance: Medium Uneven	Frame: Medium
corss		
Bangs: No	Implants: No N/A	Flesh: Medium
Feed: on ewe, on stuble		Shrink: 0%
Days Weaned: N/A		Heifers Sell Back of Steers:
Vaccinations:		
Weigh Info: Over night stand in corral @ daylight weigh on truck straight after 5 mile haul		
Weigh On: Truck		
Comments: This a hardy set of high altitude lambs that will be off the ewe and on hay stubble for 10 plus days. will make freight adjustment or finish truck with like lambs .		
Rep: Wayne Cowley 435-979-3725		

LOT: 5479	JOHN MIKKELSEN	Deliver 9/15/2025 -10/01/2025
850 Lambs Base Weight: 97		Slide Type: 2-way
Location: 60 miles nouth of Salina, Utah		Weight Stop: 7lb
Color: 70% SMUT, 30% WF	Origin: Home Raised	Slide Amount: .80
Breed: Rambouillet/Suffolk	Variance:	Frame: Medium
Bangs: No	Implants: No N/A	Flesh: Medium
Feed: One Ewe High Mountain Pasture		Shrink: N/A
Days Weaned: N/A		Heifers Sell Back of Steers:
Vaccinations: No shots		
Weigh Info: Stand in corral, early morning sort off ewe, weigh on ground, straight		
Weigh On: Ground		
Comments: This is a strong set of lambs that have been run for generations.		
Rep: Wayne Cowley 435-979-3725 / Bob Bagley 435-979-7952		

LOT: 5480	EPH JENSEN LIVESTOCK, LLC	Deliver 9/25/2025 -10/5/2025
510 Lambs Base Weight: 100		Slide Type: 2-way
Location: Kamas, Utah +40 Miles East		Weight Stop: 7lb
Color: 70% Smut Face, 30% White Face	Origin: Home Raised	Slide Amount: 1.00
Breed: RambouilletX Ewes; 70% Suffolk	Variance: Slightly Uneven	Frame: Medium
Bucks & 30% Rambouillet Bucks		
Bangs: No	Implants: No N/A	Flesh: Medium
Feed: On ewe on native high mountain range, summered @ 7-10,000'		Shrink: 0%
Days Weaned: N/A		Heifers Sell Back of Steers:
Vaccinations: C&D		
Weigh Info: Overnight stand, off feed and water, sort from ewes @ daylight, load and haul 30 miles, weigh on truck straight		
Weigh On: Truck		
Comments: Late September or early October delivery! Really nice set of reputation feeder lambs from a 4th generation sheep operation. Opportunity to purchase 2,000 from the same ranch.		
Rep: Clint Ward (435) 760-6251		
Option on Next Lot		

LOT: 5481	EPH JENSEN LIVESTOCK, LLC	Deliver 9/25/2025 -10/5/2025
510 Lambs Base Weight: 100		Slide Type: 2-way
Location: Kamas, Utah +40 Miles East		Weight Stop: 7lb
Color: 70% Smut Face, 30% White Face	Origin: Home Raised	Slide Amount: 1.00
Breed: RambouilletX Ewes; 70% Suffolk	Variance: Slightly Uneven	Frame: Medium
Bucks & 30% Rambouillet Bucks		
Bangs: No	Implants: No N/A	Flesh: Medium
Feed: On ewe on native high mountain range, summered @ 7-10,000'		Shrink: 0%
Days Weaned: N/A		Heifers Sell Back of Steers:
Vaccinations: C&D		
Weigh Info: Overnight stand, off feed and water, sort from ewes @ daylight, load and haul 30 miles, weigh on truck straight		
Weigh On: Truck		
Comments: Late September or early October delivery! Really nice set of reputation feeder lambs from a 4th generation sheep operation. Opportunity to purchase 2,000 from the same ranch.		
Rep: Clint Ward (435) 760-6251		
Option on Next Lot		

LOT: 5482	EPH JENSEN LIVESTOCK, LLC	Deliver 9/25/2025 -10/5/2025
510 Lambs Base Weight: 100		Slide Type: 2-way
Location: Kamas, Utah +40 Miles East		Weight Stop: 7lb
Color: 70% Smut Face, 30% White Face	Origin: Home Raised	Slide Amount: 1.00
Breed: RambouilletX Ewes; 70% Suffolk Bucks & 30% Rambouillet Bucks	Variance: Slightly Uneven	Frame: Medium
Bangs: No	Implants: No N/A	Flesh: Medium
Feed: On ewe on native high mountain range, summered @ 7-10,000'		Shrink: 0%
Days Weaned: N/A		Heifers Sell Back of Steers:
Vaccinations: C&D		
Weigh Info: Overnight stand, off feed and water, sort from ewes @ daylight, load and haul 30 miles, weigh on truck straight		
Weigh On: Truck		
Comments: Late September or early October delivery! Really nice set of reputation feeder lambs from a 4th generation sheep operation. Opportunity to purchase 2,000 from the same ranch.		
Rep: Clint Ward (435) 760-6251		
Option on Next Lot		

LOT: 5483	EPH JENSEN LIVESTOCK, LLC	Deliver 9/25/2025 -10/5/2025
510 Lambs Base Weight: 100		Slide Type: 2-way
Location: Kamas, Utah +40 Miles East		Weight Stop: 7lb
Color: 70% Smut Face, 30% White Face	Origin: Home Raised	Slide Amount: 1.00
Breed: RambouilletX Ewes; 70% Suffolk Bucks & 30% Rambouillet Bucks	Variance: Slightly Uneven	Frame: Medium
Bangs: No	Implants: No N/A	Flesh: Medium
Feed: On ewe on native high mountain range, summered @ 7-10,000'		Shrink: 0%
Days Weaned: N/A		Heifers Sell Back of Steers:
Vaccinations: C&D		
Weigh Info: Overnight stand, off feed and water, sort from ewes @ daylight, load and haul 30 miles, weigh on truck straight		
Weigh On: Truck		
Comments: Late September or early October delivery! Really nice set of reputation feeder lambs from a 4th generation sheep operation. Opportunity to purchase 2,000 from the same ranch.		
Rep: Clint Ward (435) 760-6251		

LOT: 5484	DUSTY ALLRED	Deliver 9/15/2025 -10/01/2025
500 Lambs Base Weight: 100		Slide Type: 2-way
Location: Fairview,Utah Plus 15		Weight Stop: 7lb
Color: smut & white face	Origin: Home Raised	Slide Amount: .80
Breed: Rambouillet, Suffolk, Hamp x	Variance: Very Uneven	Frame: Medium
Bangs: No	Implants: No N/A	Flesh: Medium
Feed: on mtn pasture on Ewe		Shrink: 0%
Days Weaned: N/A		Heifers Sell Back of Steers:
Vaccinations:		
Weigh Info: Over night stand in corral sort off ewe @ daylight weigh on ground straight.		
Weigh On: Ground		
Comments: Nice set of lambs run in the High Mountains of central Utah		
Rep: Wayne Cowley 435-979-3725		

LOT: 5485	DUSTY ALLRED	Deliver 9/20/2025 -10/01/2025
475 Lambs Base Weight: 105		Slide Type: 2-way
Location: Scofield, Utah		Weight Stop: 7lb
Color: smut & white face	Origin: Home Raised	Slide Amount: .80
Breed: Rambouillet, Suffolk, Hamp x	Variance: Slightly Uneven	Frame: Medium
Bangs: No	Implants: No N/A	Flesh: Medium
Feed: on mtn pasture on Ewe		Shrink: 0%
Days Weaned: N/A		Heifers Sell Back of Steers:
Vaccinations:		
Weigh Info: Over night stand in corral sort off ewe @ daylight weigh on ground straight.		
Weigh On: Ground		
Comments: Nice set of lambs run in the High Mountains of central Utah		
Rep: Wayne Cowley 435-979-3725/Bob Bagley 435-979-7952		

LOT: 5486

OKELBERRY RANCH LLC

Deliver 9/13/2025 -9/25/2025

390 Mixed Group **Base Weight:** 128

Slide Type: 2-way

Location: 45 mi SE of Salt Lake City, Utah

Weight Stop: 7lb

Color: 50% SMUT, 50% WF

Origin: Home Raised

Slide Amount: .80

Breed: Rambouillet ewes, Rambouillet, Suffolk bucks

Variance:

Frame: Large

Bangs: No

Implants: No N/A

Flesh: Fleishy

Feed: High Mountain Pasture

Shrink: 0%

Days Weaned: N/A

Heifers Sell Back of Steers:

Vaccinations: All Natural

Weigh Info: Stand overnight in corral, weigh on ground, weight straight

Weigh On: Ground

Comments: This is a strong reputation set of all natural lambs coming from a historic ranch which has been in business well over 100 years. We can make regular sized loads or big loads according to buyers trucks.

Rep: Wayne Cowley 435-979-3725

Thank you!



WE WANT TO EXTEND OUT HEARTFELT THANKS TO ALL THE BUYERS AND CONSIGNORS WHO DO BUSINESS WITH US. YOUR TRUST MEANS EVERYTHING TO US AND WE PRIDE OURSELVES ON HAVING YOUR BEST INTEREST IN MIND. THANK YOU FOR SUPPORTING OUR LAMB AND CALF SPECTACULAR IN SALT LAKE CITY UTAH. WE WISH YOU ALL THE BEST AND CAN'T WAIT TO SEE YOU NEXT TIME.