

**CATTLE DRIVE**



**VIDEO MARKET**

# LAMB AND CALF SPECTACULAR

PRESENTED BY CATTLE DRIVE  
VIDEO MARKET AND ZOETIS



**zoetis**

Photo Credit: Cally Bradshaw



**August 20, 2025**

**Little America  
500 S Main St  
Salt Lake City, UT**

**10:00AM MST**

**Bid Online at [cattleusa.com](http://cattleusa.com)**

**Bid Line (844) 770-0786**

**[cattledrivevideo.com](http://cattledrivevideo.com)**



## CATTLE LOTS

WEDNESDAY AUGUST 20 10:00AM MST

Lot	State	Consigner	Hd	Description	Weight	Ship	Date
5401	UT	ELBERTA VALLY AG	31	COWS	1550	8/22/2025	8/28/2025
5402	UT	BATEMAN MOSIDA FARMS	35	COWS	1575	8/22/2025	8/29/2025
5403	UT	BATEMAN MOSIDA FARMS	35	COWS	1575	8/22/2025	8/29/2025
5404	NE	BLOMENKAMP LIVESTOCK LLC.	90	COWS	1700	8/22/2025	8/28/2025
5405	ID	ROCHE CATTLE COMPANY	38	COWS	1500	8/20/2025	8/26/2025
5406	WY	TRUE RANCHES	185	COWS	1600	8/22/2025	8/28/2025
5407	WY	BILL KLEIN	35	COWS	1550	8/22/2025	8/29/2025
5408	ID	BLOTTER RANCH	50/50	STR CALVES/HFR CALVES	490/470	10/15/2025	11/5/2025
5409	CO	CHRIS AND DAVE SAMMONS / TERRY AND PAT PRYOR	85	STEER CALVES	550	10/25/2025	11/5/2025
5410	WY	SWEAT RANCH	60/40	STR CALVES/HFR CALVES	560/535	10/15/2025	11/30/2025
5411	UT	MOON RANCH, LLC	88	STEERS	565	10/27/2025	11/1/2025
5412	UT	MOON RANCH, LLC	95	CALVES	525	10/27/2025	11/1/2025
5413	UT	MOON RANCH, LLC	65/30	STR CALVES/HFR CALVES	540/500	10/27/2025	11/1/2025
5414	UT	MILLERBERG LIVESTOCK	50/40	STR CALVES/HFR CALVES	575/ 560	10/20/2025	11/10/2025
5415	WY	BROKEN S INC	90	STEER CALVES	575	10/20/2025	10/30/2025
5416	UT	DAVE HANSEN	90	WEANED STEERS	670	12/1/2025	12/10/2025
5417	UT	DAVE HANSEN	80	WEANED HEIFERS	600	12/1/2025	12/10/2025
5418	UT	COLOR COUNTRY CATTLE	83	WEANED STEERS	590	12/5/2025	12/20/2025
5419	UT	COLOR COUNTRY CATTLE	80	WEANED HEIFERS	600	11/10/2025	11/25/2025
5420	UT	COLOR COUNTRY CATTLE	60	STEERS	825	2/20/2026	3/5/2026
5421	WY	XX CATTLE CO	74	HEIFERS	750	9/20/2025	10/5/2025
5422	WY	XX CATTLE CO	64	STEERS	850	9/20/2025	10/5/2025
5423	MO	G&R LIVESTOCK	185	HEIFERS	825	9/1/2025	9/15/2025
5424	UT	JA FARMS	62	HEIFERS	830	9/1/2025	9/15/2025
5425	CO	ANTON AND KATHI HERMES	110	OPEN HEIFERS	900	9/15/2025	10/1/2025
5426	CO	ANTON AND KATHI HERMES	110	OPEN HEIFERS	920	9/15/2025	10/1/2025

**BID ONLINE AT CATTLEUSA.COM**  
**BID LINE (844) 779-0786**



*Thank  
you!*



# Prime them for the dry lot.

There's a **NEW** implant for that. **Synovex<sup>®</sup> Primer<sup>™</sup>**



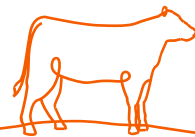
**Prime weight. Prime precision.**  
**Start with a dialed-in combination trenbolone acetate (TBA)/estradiol benzoate implant.**

Starting with a combination TBA/estradiol benzoate implant can help produce more pounds, extend your growth curve and keep cattle leaner longer, helping you add value to your cattle.<sup>1</sup>

Synovex<sup>®</sup> Primer<sup>™</sup> makes it easy and comes with Zoetis' decades of service and experience in working with operations just like yours. Contact your Zoetis sales representative or visit [Zoetis.com](https://zoetis.com) to learn more.



Compatible with Exact 10<sup>®</sup>  
and The Revolver applicators.



Synovex Primer contains 50 mg trenbolone acetate and 7 mg estradiol benzoate.

Refer to individual labels for complete directions for use, precautions, and warnings.  
Reimplant only if and as directed in labeling.

<sup>1</sup>Smerchek DT, Smith ZK. Effects of increasing doses of trenbolone acetate and estradiol on finishing phase growth performance, carcass trait responses, and serum metabolites in beef steers following implantation. *Transl Anim Sci.* 2020;4(3):1-8.



# J&T EXPRESS INC

*Hauling livestock since 1982*

Backed by over 40 years in the business, J&T Express Inc is a family-run operation that understands livestock and the folks who raise them. Whether you're moving cattle, hogs, or sheep – across town or across state lines – we've got the equipment, the team and the know-how to get it done right.



**COAST TO COAST LIVESTOCK TRANSPORTATION**



**712-790-3359**

**WWW.BEHRENSANDCO.COM**







# UTAH FARM BUREAU FEDERATION

We are Utah's largest voluntary organization of farmers and ranchers, committed to protecting Utah's farms and ranches, and ensuring a safe, fresh, and locally grown food supply.

**JOIN US AND  
CONNECT TO THE MIRACLE OF AGRICULTURE!**



[WWW.UTAHFARMBUREAU.ORG/JOIN](http://WWW.UTAHFARMBUREAU.ORG/JOIN)





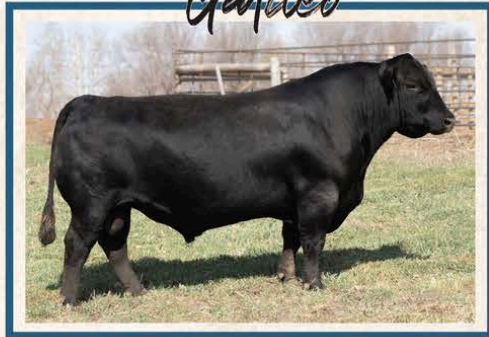
# 14<sup>th</sup> Annual LYMAN LIVESTOCK BULL SALE

REFERENCE SIRE

GW *Medicine Man* 200K



HOOK'S *Galileo* 210G



ASR *American Proud* H0301



KBHR *Global* J138



1:00 PM MT | PRODUCERS LIVESTOCK MARKET  
SALINA, UTAH

## FEBRUARY 28

PAP Tested **100** Bulls Sell

SIMMENTAL • SIMANGUS™ • ANGUS

- PAP tested at 6,300' elevation
- Breeding Soundness Exam and Semen Tested
- "Cattlemen to Cattlemen" guarantee
- Bulls raised by BLM range-calved cows on the 6,500' Utah high
- Developed to go to work in rugged country

Bid Live Online  
**DVAuction**  
Broadcasting Real-Time Auctions

Marty Ropp 406-581-7835  
Corey Wilkins 256-590-2487  
Jared Murnin 406-321-1542

[alliedgeneticresources.com](http://alliedgeneticresources.com)

**ALLIED**  
GENETIC RESOURCES

### LYMAN LIVESTOCK

Eric Lyman 801-310-1570 | Kevin Lyman 801-376-5774  
Mike Lyman 801-404-0587 | Clay Lyman 801-369-5164  
[www.LYMANLIVESTOCK.com](http://www.LYMANLIVESTOCK.com)



At Western AgCredit,  
Agriculture is more  
than a department,  
it is who we are.



Whether you need to finance **real estate, equipment,** or  
**operating expenses,** Western AgCredit has an option for you.  
**Work with a lender that knows about agriculture!**



# THE NEXT GENERATION OF LIVESTOCK PRODS IS HERE!

## THE HORNET 2600

- ✓ USB RECHARGEABLE
- ✓ WATER-RESISTANT
- ✓ LIGHTWEIGHT
- ✓ DURABLE
- ✓ RUBBER OVERMOLDED



erculesAG.com **806-340-7664**

**DISCOUNT CODE: CATTLE10**



Where Food Comes From

# CARE Certified



Animal  
Care



Environmental  
Stewardship



People &  
Community



CARE Certified supports animal protein producers by verifying ethical and sustainable farming practices. The program focuses on humane animal care, responsible resource management and strengthening community ties, helping align with consumer demand for regenerative production practices while fostering long-term sustainability.

**Responsible Practices.  
Sustainable Futures.**

## Up to \$90 Premium

CARE Certified cattle can earn up to \$90 more per head.

## 71% of Consumers

Say they are willing to pay more for CARE Certified meat products.

[wfcfcare.com](http://wfcfcare.com)





# Sustainably Raised From The Heart



## Shaped By Producers, For Producers

The CARE Certified Standard was developed with direct input from cattle producers, ensuring it addresses the real challenges and needs of the industry. By listening to cattlemen, CARE Certified provides a tailored solution for sustainable ranching practices, recognizing producers for their hard work while supporting the need to create a lasting legacy for future generations.

### EOY 2024 Results



**1,414,834**  
Head of Cattle



**1,219**  
Locations



**35**  
States



**56,826,400**  
Grazing Acres

## Join the CARE Movement Today!



## Rooted in Trust

Where Food Comes From, Inc. fosters authenticity in food production by elevating systems and adding value to the people behind them. Through certification and verification, we connect consumers to foods that reflect their ideals.



A Legacy of Trust  
and Integrity  
SINCE 1995



## Where Food Comes From

866.395.5883 | [info@wherefoodcomesfrom.com](mailto:info@wherefoodcomesfrom.com) | [imiglobal.com](http://imiglobal.com) | [wherefoodcomesfrom.com](http://wherefoodcomesfrom.com)

# J&T EXPRESS INC

Backed by over 40 years in the business, J&T Express Inc is a family-run operation that understands livestock and the folks who raise them. Whether you're moving cattle, hogs, or sheep – across town or across state lines – we've got the equipment, the team and the know-how to get it done right.

**Smoke Behrens | 712-790-3359**

[www.behrensandco.com](http://www.behrensandco.com)



*Hauling livestock since 1982*






# WHOA.

MORE POUNDS.  
MORE CALVES.  
MORE PROFIT.

Herefords are known as the efficiency experts for a reason.  
Herefords boost pregnancy rates by 7% and add \$30 per head in feedyard profitability in a crossbreeding system.  
And Hereford genetics bring unrivaled hybrid vigor, longevity and disposition.

**COME HOME TO HEREFORD.**



Hereford.org | 816-842-3757

AHA 8.5x4 4c-Cattle Drive.indd 1

6/5/25 6:09 AM



## Take Pride in Your Work



**JONAH BANK<sup>®</sup>**  
OF WYOMING  
*Building a Better Wyoming*

Member **FDIC**  **EQUAL HOUSING LENDER**

JBW NMLS #313969

[www.jonah.bank](http://www.jonah.bank)



Brief Summary of full Prescribing Information.

**VALCOR™**

(doramectin and levamisole injection)

(5 mg/mL doramectin, 150 mg/mL levamisole hydrochloride)

**CAUTION:** Federal law restricts this drug to use by or on the order of a licensed veterinarian.

**INDICATIONS:**

VALCOR™ is indicated for the treatment and control of the following species of parasites in beef cattle two months of age and older and in replacement dairy heifers less than 20 months of age. Not for use in beef bulls intended for breeding over 1 year of age, dairy calves, and veal calves.

Gastrointestinal Roundworms (adults and fourth stage larvae): *Ostertagia ostertagi* (including inhibited larvae), *O. lyrata*, *Haemonchus placei*, *Trichostrongylus axei*, *T. colubriformis*, *T. longispicularis*\*, *Cooperia oncophora*, *C. pectinata*\*, *C. punctata*, *C. summatoda*, *Bunostomum phlebotomum*\*, *Strongylus papillosus*\*, *Oesophagostomum radiatum*, *Trichostrongylus* spp.\*, *Nematodirus helvetianus*\*, Lungworms (adults and fourth stage larvae): *Dictyocaulus viviparus*. Eyeworms (adults): *Thelazia* spp. Grubs (parasitic stages): *Hypoderma bovis*, *H. lineatum*. Sucking Lice: *Haematopinus eurysternus*, *Linognathus setosus*, *Solenopotes capillatus*. Mange Mites: *Psoroptes bovis*, *Sarcoptes scabiei*. \*Adults only

**WARNINGS AND PRECAUTIONS:**

**WITHDRAWAL PERIODS AND RESIDUE WARNINGS:**

Cattle must not be slaughtered for human consumption within 15 days following last treatment with this drug product. Not for use in female dairy cattle 20 months of age or older including dry dairy cows; use in these cattle may cause drug residues in milk and/or in calves born to these cows or heifers. Not for use in beef calves less than 2 months of age, dairy calves, and veal calves. A withdrawal period has not been established for this product in pre-ruminating calves.

**User Safety Warnings:**

Not for human use. Keep out of reach of children. If accidental eye contact occurs, flush eyes immediately with water for 15 minutes and seek medical attention. If wearing contact lenses, flush eyes immediately with water before removing lenses then continue rinsing for at least 15 minutes. Do not eat, drink or smoke while handling the product. Wash hands after use. Take care to avoid accidental self-injection. If a accidental injection occurs, seek medical attention and provide product package insert to medical professional. To obtain a Safety Data Sheet(s), contact Zoetis Inc. at 1-888-963-8471 or [www.zoetis.com](http://www.zoetis.com).

**Animal Safety Warnings and Precautions:**

Use of levamisole in cattle treated in the last few days with cholinesterase inhibitors such as organophosphates or with morantel may enhance the toxic effects of levamisole. Use together with caution.

Destruction of *Hypoderma* larvae (cattle grub) at the period when these grubs are in vital areas may cause undesirable host-parasite reactions including the possibility of fatalities. Killing *H. lineatum* when it is in the tissue surrounding the gutlet may cause blast, killing *H. bovis* when it is in the vertebral canal may cause stag-ging or paralysis. These reactions are not specific to treatment with VALCOR™ and can occur with any successful treatment of grubs. Cattle should be treated either before or after these stages of grub development. Consult your veterinarian concerning the proper time for treatment. Follow recommended dosage carefully. Reproductive safety has not been evaluated in bulls intended for breeding.

**ADVERSE REACTIONS:**

This product is likely to cause swelling at the injection site. Tissue damage at the injection site may also occur, including possible granulomas and necrosis. These reactions have resolved without treatment. Local tissue reaction may result in trim loss of edible tissue at slaughter. A single death attributed to clostridial infection associated with the injection of VALCOR™ was reported in a non-pilot effectiveness study. Observe cattle for injection site reactions. If injection site reactions are suspected, consult your veterinarian. This product is not for intravenous or intramuscular use. Hypersalivation may be observed; however this reaction will disappear within a few hours. If this condition persists, a veterinarian should be consulted.

**Contact Information:**

Contact Zoetis Inc. at 1-888-963-8471 or [www.zoetis.com](http://www.zoetis.com). To report suspected adverse drug experiences, contact Zoetis Inc. at 1-888-963-8471. For additional information about reporting adverse drug experiences for animal drugs, contact FDA at 1-888-FDA-VETS or <http://www.fda.gov/medwatch>.

**TARGET ANIMAL SAFETY:**

Margin of Safety: Subcutaneous administration of VALCOR™ was well tolerated in calves as young as 3 months of age at 1, 2, or 3 times the recommended dose. Dose-dependent post-dose hypersalivation was seen in all treated groups compared to the controls. All cases of hypersalivation were mild, transient, and resolved without further medical intervention. Dose-related injection site reactions were observed, and those in the 1X group resolved between 21 and 28 days post injection. Injection site reactions were primarily swelling which resolved between 21 and 28 days post injection. Findings from the injection sites included swelling, edema, inflammation, muscle necrosis and fibrosis.

Female Reproductive Safety: The reproductive safety of VALCOR™ was established in two studies with female cattle. First, a single dose of VALCOR™ was administered subcutaneously at 3 times the recommended dose at times coinciding with folliculogenesis, implantation, or organogenesis, and had no effects on conception, calving, abortion, and stillbirth rates, and post-natal viability up to 30±2 days post-calving. There were no congenital abnormalities. The only test article-related change was an increase in incidence and duration of swelling at injection sites compared with control, but all swellings eventually resolved. In a second study, a single dose of VALCOR™ administered subcutaneously at 3 times the recommended dose at either early or late gestation had no effects on calving, abortion, and stillbirth rates, and post-natal viability up to 30±2 days post-calving. One control calf and two treated calves were born with congenital abnormalities and did not survive. These were not determined to be test article-related. The only test article-related change was an increase in incidence and duration of swelling at injection sites, but all swellings eventually resolved. Not for use in bulls intended for breeding over 1 year of age, as reproductive safety has not been evaluated.

**HOW SUPPLIED:**

VALCOR™ is available in 100 mL, 250 mL and 500 mL multi-dose, rubber-capped glass vials.

**STORAGE, HANDLING, AND DISPOSAL:**

Store below 25°C (77°F). Do not expose to light for extended periods of time. Do not contaminate water by direct application or by improper disposal of drug containers. Dispose of containers in a approved landfill or by incineration.

Approved by FDA under NADA #141-553

**zoetis**

Distributed by:  
Zoetis Inc.  
Kalamazoo, MI 49007

June 2022

40031685A&P

# TOUGH ON TOUGH WORMS, EASY ON YOU.

You can achieve effective parasite control in one product, where before you may have needed two. Valcor (doramectin and levamisole injection) is the first prescription cattle dewormer with two active ingredients in one dose. It's never been easier to be tough. Get tough at [ValcorTough.com](http://ValcorTough.com).

**VALCOR®**  
(doramectin and levamisole injection)



**IMPORTANT SAFETY INFORMATION:** Do not treat cattle with Valcor within 15 days of slaughter. Not for use in female dairy cattle 20 months of age or older, including dry dairy cows; not for use in beef calves less than 2 months of age, dairy calves, and veal calves. Safety has not been evaluated in breeding bulls. Use with caution in cattle treated with cholinesterase inhibitors. This product is likely to cause injection site swelling; tissue damage (including granulomas and necrosis) may occur. These reactions have resolved without treatment. See brief summary of Prescribing Information attached.

All trademarks are the property of Zoetis Services LLC or a related company or a licensor unless otherwise noted. © 2024 Zoetis Services LLC. All rights reserved. VLC-00027R1

**zoetis**





Trace mineral injection that provides  
zinc, copper, manganese, and selenium

---

**Lactipro**<sup>®</sup>

Probiotic that stabilizes rumen pH  
and promotes healthy rumen function

Matt Storlie | [mstorlie@axiota.com](mailto:mstorlie@axiota.com) | (208) 215-0337



NaturSafe

AVAILA 4

VITALIX  
INC.

**KEEP 'EM GROWING.**

Vitalix tubs are formulated with superior ingredients specifically designed to provide effective results in all stages of production.



Learn more from your local sales manager today!  
Owen Albrecht • 385-335-1745 • [oalbrecht@vitalix.com](mailto:oalbrecht@vitalix.com)



**Ryan Trapp: (435) 452-8551**  
**[ryan@westerntireotr.com](mailto:ryan@westerntireotr.com)**

**Tremonton, UT**

**Strong, weather-resistant, and designed to last.**  
**We have tire water troughs from 5 feet to 13**  
**feet in stock and will deliver full semi loads.**





**NORTHERN**  
— FEED & BEAN —



Bob Pemberton - Feed Manager (970) 302-0066 [bob@nfbean.com](mailto:bob@nfbean.com)

Nate Lucas - Production Specialist (719) 246-0772 [nathan@nfbean.com](mailto:nathan@nfbean.com)

Austin Reitzenstein - Production Specialist (970) 324-3344

[austin@nfbean.com](mailto:austin@nfbean.com)

Brett Berry - Cheyenne Sales Rep (307) 421-6811

**Rafter C Livestock Transportation, Inc.**  
**509-760-3794**



**Ellensburg, WA. 98926**

**Nationwide Livestock Hauling**  
**\*Over 30 Years of Experience\***

**[stacy@rafterc.co](mailto:stacy@rafterc.co)**







WRAITH · SCARLETT & RANDOLPH  
Insurance  
Services, Inc.  
**W·S·R**  
ESTD 1917

# INSURANCE FOR FARMERS & RANCHERS

Farmers and ranchers face unique risks, from unpredictable weather to market fluctuations.

Insurance provides essential protection, covering crops, livestock, equipment, and property against losses.



Livestock Risk Protection (LRP)  
**insures against declining market prices.** LRP is available year round and allows you to choose from a variety of coverage levels and insurance periods to match the time you market your livestock.

## LRP



Pasture, Rangeland, and Forage (PRF) helps manage risk associated with **lack of precipitation.** PRF insurance allows you to select from a variety of coverage levels and insurance periods to customize a plan that fits your operation.

## PRF



**Craig Harrison**

Insurance Agent

☎ (707) 738-0684

✉ [charrison@wsrins.com](mailto:charrison@wsrins.com)



**Cody Alvernaz**

Insurance Agent

☎ (530) 635-1775

✉ [codya@wsrins.com](mailto:codya@wsrins.com)



FAMILY OWNED & OPERATED SINCE 1996



**CIRCLE F FARMS  
HOOPER, UT**

**Serving all your big bale hay  
needs. Buy, sell, & haul. Contact  
us for more information.**



**Rulon 801-698-0523**

**Nate 801-698-7968**

**Kai 801-645-8394**

**A HEARTFELT THANK YOU TO OUR INCREDIBLE SPONSORS FOR  
THEIR UNWAVERING SUPPORT! WE ARE PROUD TO STAND  
ALONGSIDE SUCH OUTSTANDING BUSINESSES THAT MAKE A  
LASTING IMPACT IN OUR INDUSTRY. WE ENCOURAGE ALL OF OUR  
PATRONS TO SUPPORT THESE PARTNERS WHENEVER POSSIBLE.**

**FROM ALL OF US AT PRODUCERS LIVESTOCK AND CATTLE DRIVE  
VIDEO MARKET — THANK YOU FOR HELPING MAKE WHAT WE DO  
POSSIBLE.**





<b>LOT:</b> 5401	<b>ELBERTA VALLEY AG</b>	<b>Deliver</b> 8/22/2025 -8/28/2025
<b>31 Cow</b>	<b>Base Weight:</b> 1550	<b>Slide Type:</b> 1-way
<b>Location:</b> Elberta, Utah 15 miles from I-15 Santaquin, Utah		<b>Weight Stop:</b>
<b>Color:</b> N/A	<b>Origin:</b>	<b>Slide Amount:</b> .04
<b>Breed:</b> Holstien Cow	<b>Variance:</b> Medium Uneven	<b>Frame:</b> Large
<b>Bangs:</b> No	<b>Implants:</b> No N/A	<b>Flesh:</b> Medium
<b>Feed:</b> Dairy Ration		<b>Shrink:</b> 4%
<b>Days Weaned:</b> N/A		<b>Heifers Sell Back of Steers:</b>
<b>Vaccinations:</b>		
<b>Weigh Info:</b> am gather out of pen weigh on truck with 4% shrink		
<b>Weigh On:</b> Truck		
<b>Comments:</b> Nice set of fed cows .04 cent slide if cows are more than 25 lbs light.		
<b>Rep:</b> Wayne Cowley 435-979-3725		

<b>LOT:</b> 5402	<b>BATEMAN MOSIDA FARMS</b>	<b>Deliver</b> 8/22/2025 -8/29/2025
35 Steers <b>Base Weight:</b> 1575		<b>Slide Type:</b> 1-way
<b>Location:</b> Mosida, Utah		<b>Weight Stop:</b>
<b>Color:</b> 100% Black	<b>Origin:</b> Home Raised	<b>Slide Amount:</b> .06
<b>Breed:</b> Holstein/ Angus Cross	<b>Variance:</b> Medium Uneven	<b>Frame:</b> Large
<b>Bangs:</b> No	<b>Implants:</b> No N/A	<b>Flesh:</b> Fleшы
<b>Feed:</b> Fat Ration		<b>Shrink:</b> 3%
<b>Days Weaned:</b> N/A		<b>Heifers Sell Back of Steers:</b>
<b>Vaccinations:</b>		
<b>Weigh Info:</b> early morning walk out of pen sort load on truck weigh on truck		
<b>Weigh On:</b> Truck		
<b>Comments:</b> Really nice set of crossbred fat steers that are 14 months old, yield generally low 60's. Can make a big load or 50,000 lbs load		
<b>Rep:</b> Wayne Cowley 435-979-3725		
Option on Next Lot		

<b>LOT:</b> 5403	<b>BATEMAN MOSIDA FARMS</b>	<b>Deliver</b> 8/22/2025 -8/29/2025
<b>35 Steers</b> <b>Base Weight:</b> 1575		<b>Slide Type:</b> 1-way
<b>Location:</b> Mosida, Utah		<b>Weight Stop:</b>
<b>Color:</b> 100% Black	<b>Origin:</b> Home Raised	<b>Slide Amount:</b> .06
<b>Breed:</b> Holstein/ Angus Cross	<b>Variance:</b> Medium Uneven	<b>Frame:</b> Large
<b>Bangs:</b> No	<b>Implants:</b> No N/A	<b>Flesh:</b> Fleishy
<b>Feed:</b> Fat Ration		<b>Shrink:</b> 3%
<b>Days Weaned:</b> N/A		<b>Heifers Sell Back of Steers:</b>
<b>Vaccinations:</b>		
<b>Weigh Info:</b> early morning walk out of pen sort load on truck weigh on truck		
<b>Weigh On:</b> Truck		
<b>Comments:</b> Really nice set of crossbred fat steers that are 14 months old, yield generally low 60's. Can make a big load or 50,000 lbs load		
<b>Rep:</b> Wayne Cowley 435-979-3725		

<b>LOT:</b> 5404	<b>BLOMENKAMP LIVESTOCK LLC.</b>	<b>Deliver</b> 8/22/2025 -8/28/2025
<b>90 Cows</b> <b>Base Weight:</b> 1700		<b>Slide Type:</b> 1-way
<b>Location:</b> Broadwater, Neb 50 miles south east of Scottsbluff, Neb		<b>Weight Stop:</b> N/A
<b>Color:</b> 70% blk balance red and char	<b>Origin:</b> Home Raised and Purchased	<b>Slide Amount:</b> .04
<b>Breed:</b> Angus, Char and angus crosses	<b>Variance:</b>	<b>Frame:</b> Large
<b>Bangs:</b> No	<b>Implants:</b> No N/A	<b>Flesh:</b> Fleishy
<b>Feed:</b> High corn fat ration		<b>Shrink:</b> 4%
<b>Days Weaned:</b> N/A		<b>Heifers Sell Back of Steers:</b>
<b>Vaccinations:</b>		
<b>Weight Info:</b> Morning weigh on the ground		
<b>Weigh On:</b>		
<b>Comments:</b> Excellent set of white fat cows. That have been on a high corn fat ration for 100+ days. slide goes into effect if cows ave 50 lbs under the base. Cows should all grade white fat no problem. Sort 3 loads from 4 with option to take big loads.		
<b>Rep:</b> Producers Livestock Marketing		



<b>LOT:</b> 5405	<b>ROCHE CATTLE COMPANY</b>	<b>Deliver</b> August 20 -August 26
38 Cows <b>Base Weight:</b> 1500		<b>Slide Type:</b>
<b>Location:</b> 45 miles west of Boise, ID		<b>Weight Stop:</b>
<b>Color:</b> 85% BLK BWF 15% Char and Red	<b>Origin:</b>	<b>Slide Amount:</b>
<b>Breed:</b> Angus X	<b>Variance:</b> Slightly Uneven	<b>Frame:</b> Large
<b>Bangs:</b> No	<b>Implants:</b> No N/A	<b>Flesh:</b> Fleishy
<b>Feed:</b> Corn Silage and Chopped Hay		<b>Shrink:</b> 4%
<b>Days Weaned:</b> N/A		<b>Heifers Sell Back of Steers:</b>
<b>Vaccinations:</b>		
<b>Weigh Info:</b> AM gather from pens \$.04 slide only if more than 50# light		
<b>Weigh On:</b> Ground		
<b>Comments:</b> Can adjust to 50k load if buyer needs.Nice Load of Fed cows. 100 days on feed. Only Slide if 50#light or more		
<b>Rep:</b> Micah Wilson 541-403-3051		

<b>LOT:</b> 5406	<b>TRUE RANCHES</b>	<b>Deliver</b> 8/22/2025 -8/28/2025
185 Cows <b>Base Weight:</b> 1600		<b>Slide Type:</b> 1-way
<b>Location:</b> 70 miles north of Cheyenne Wy.		<b>Weight Stop:</b>
<b>Color:</b> Mostly black few red and char	<b>Origin:</b> Home Raised and Purchased	<b>Slide Amount:</b> .04
<b>Breed:</b> Angus angus crossed	<b>Variance:</b> Medium Uneven	<b>Frame:</b> Large
<b>Bangs:</b> No	<b>Implants:</b> No N/A	<b>Flesh:</b> Fleishy
<b>Feed:</b> Fat ration		<b>Shrink:</b> 4
<b>Days Weaned:</b> N/A		<b>Heifers Sell Back of Steers:</b>
<b>Vaccinations:</b>		
<b>Weigh Info:</b> Early am weigh		
<b>Weigh On:</b> Truck		
<b>Comments:</b> Excellent set of white fat cows. That have been on a high corn fat ration for 100 days. slide goes into effect if cows are 50 lbs under the base. Buyer has the option to take cows in one or two deliveries.		
<b>Rep:</b> Producers livestock.		

<b>LOT:</b> 5407	<b>BILL KLEIN</b>	<b>Deliver</b> 8/22/2025 -8/29/2025
35 Cows <b>Base Weight:</b> 1550		<b>Slide Type:</b> 1-way
<b>Location:</b> Wheatland, WY		<b>Weight Stop:</b> N/A
<b>Color:</b> 90% BIK BWF 10% Red RWF	<b>Origin:</b>	<b>Slide Amount:</b> .04
<b>Breed:</b> Angus x	<b>Variance:</b> Even	<b>Frame:</b> Large
<b>Bangs:</b> No	<b>Implants:</b> No N/A	<b>Flesh:</b> Fleishy
<b>Feed:</b> Silage, Corn		<b>Shrink:</b> 4%
<b>Days Weaned:</b> N/A		<b>Heifers Sell Back of Steers:</b>
<b>Vaccinations:</b>		
<b>Weigh Info:</b> Early am weigh on buyers trucks		
<b>Weigh On:</b> Truck		
<b>Comments:</b> Hard fed cows with a great weigh up. 100 days plus fed. Only slide if 50# light or more.		
<b>Rep:</b> Jeff Berry 307-421-3031		



<b>LOT:</b> 5408	<b>BLOTTER RANCH</b>	<b>Deliver</b> 10/15/2025 -11/5/2025
50 Steer Calves, 50 Heifer Calves <b>Base Weight:</b> 490/470		<b>Slide Type:</b> 2-way
<b>Location:</b> Soda Springs ID, which is 130 miles North of Evanston Wy.		<b>Weight Stop:</b> 25lb
<b>Color:</b> 90% black hided with remaining cattle to be red and charolais crosses	<b>Origin:</b> Home Raised	<b>Slide Amount:</b> .20
<b>Breed:</b> Angus- Angus Cross	<b>Variance:</b> Slightly Uneven	<b>Frame:</b> Medium
<b>Bangs:</b> No	<b>Implants:</b> No N/A	<b>Flesh:</b> Medium
<b>Feed:</b> On cow and meadow grass.		<b>Shrink:</b> 2%
<b>Days Weaned:</b> N/A		<b>Heifers Sell Back of Steers:</b> \$24
<b>Vaccinations:</b> Multimin 90, 8 way, bovishield gold 1 shot, dectomax pour on. With 2 rounds of shots.		
<b>Weigh Info:</b> Gather early out of large pasture, trail 2 miles to corral, weigh on ground with 2% shrink.		
<b>Weigh On:</b> Ground		
<b>Comments:</b> Real good set of high mountain calves w/lots of frame and stretch that should perform well @ next level. May be a couple family brands.		
<b>Rep:</b> Tyler Hunter		

<b>LOT:</b> 5409	<b>CHRIS AND DAVE SAMMONS / TERRY AND PAT PRYOR</b>	<b>Deliver</b> 10/25/2025 -11/5/2025
85 Steer Calves <b>Base Weight:</b> 550		<b>Slide Type:</b> 2-way
<b>Location:</b> Kremmling CO		<b>Weight Stop:</b> 25lb
<b>Color:</b> 90% black, 10% red	<b>Origin:</b> Home Raised	<b>Slide Amount:</b> .24
<b>Breed:</b> Angus/SimAngus	<b>Variance:</b> Slightly Uneven	<b>Frame:</b> Medium
<b>Bangs:</b> No	<b>Implants:</b> No N/A	<b>Flesh:</b> Medium
<b>Feed:</b> Native grass/Cow		<b>Shrink:</b> 2%
<b>Days Weaned:</b> N/A		<b>Heifers Sell Back of Steers:</b>
<b>Vaccinations:</b> Sammons-Covexin 8 @ branding, Bovishield gold 1 shot, 7-way w/ Somnus at preconditioning. Pryor- 2 rounds Presponse, 8 way W/Somnus		
<b>Weigh Info:</b> Early am gather from both sets. Each will haul 10-35 miles to shipping pens to be weighed.		
<b>Weigh On:</b> Ground		
<b>Comments:</b> A very nice set of high altitude steer calves from 2 different family herds. A great weigh up, on like cattle. Out of registered high altitude angus and Diamond Peak Sim/Angus bulls. 3% freight adjustment on total freight bill.		
<b>Rep:</b> Jake Mahon, Producers Greeley, (970)531-8326		

<b>LOT:</b> 5410	<b>SWEAT RANCH</b>	<b>Deliver</b> 10/15/25 -11/5/25
60 Steer Calves, 40 Heifer Calves <b>Base Weight:</b> 560/535		<b>Slide Type:</b> 2-way
<b>Location:</b> 180 miles southwest of Rock Springs WY.		<b>Weight Stop:</b> 25lb
<b>Color:</b> 75% Black hided with remaining being red and Charolais crosses.	<b>Origin:</b> Home Raised	<b>Slide Amount:</b> .20
<b>Breed:</b> Angus- Angus Cross	<b>Variance:</b> Slightly Uneven	<b>Frame:</b> Medium
<b>Bangs:</b> No	<b>Implants:</b> No N/A	<b>Flesh:</b> Medium
<b>Feed:</b> Meadow grass and on cows		<b>Shrink:</b> 0%
<b>Days Weaned:</b> N/A		<b>Heifers Sell Back of Steers:</b> \$20
<b>Vaccinations:</b> Vista one shot, Vision 8, Ivermectin, Nasalgen. Steers calves have had a ralgro implant.		
<b>Weigh Info:</b> Two day gather: Gather cattle, drive 10 miles to small pasture. Rest overnight. Early morning gather out of small pasture, drive one miles to corrals, sort and sex cattle with 0% shrink.		
<b>Weigh On:</b> Ground		
<b>Comments:</b> Very nice set of cattle. Good frame and a long-standing reputation of outstanding gain with their cattle.		
<b>Rep:</b> Tyler Hunter		



<b>LOT:</b> 5411	<b>MOON RANCH, LLC</b>	<b>Deliver</b> 10/27/2025 -11/01/2025
88 Steers <b>Base Weight:</b> 565		<b>Slide Type:</b> 2-way
<b>Location:</b> Hanna, Utah		<b>Weight Stop:</b> 25lb
<b>Color:</b> 95% BLK or BWF, Balance RED, RWF or CHARX	<b>Origin:</b> Home Raised	<b>Slide Amount:</b> .20
<b>Breed:</b> Angus & AngusX Cows; Angus Bulls	<b>Variance:</b> Slightly Uneven	<b>Frame:</b> Medium
<b>Bangs:</b> No	<b>Implants:</b> Yes, Ralgro 6/1/2025	<b>Flesh:</b> Medium
<b>Feed:</b> On cow on native high elevation mountain pasture w/free choice salt & mineral		<b>Shrink:</b> 1%
<b>Days Weaned:</b> N/A		<b>Heifers Sell Back of Steers:</b>
<b>Vaccinations:</b> @ Branding - Bovishield Gold One Shot & Ultrabac8; @ Precon - Bovishield Gold One Shot & Ultrabac8		
<b>Weigh Info:</b> Early AM gather out of field, sort from cows, sex, sort for size, load on trucks, haul 30 miles and weigh on the truck w/1% shrink.		
<b>Weigh On:</b> Truck		
<b>Comments:</b> Really nice set of calves with a good sort. Strong and hearty calves with a good reputation.		
<b>Rep:</b> Clint Ward (435) 760-6251		

<b>LOT:</b> 5412	<b>MOON RANCH, LLC</b>	<b>Deliver</b> 10/27/2025 -11/01/2025
95 Heifers <b>Base Weight:</b> 525		<b>Slide Type:</b> 2-way
<b>Location:</b> Hanna, Utah		<b>Weight Stop:</b> 25lb
<b>Color:</b> 95% BLK or BWF, Balance RED, RWF or CHARX	<b>Origin:</b> Home Raised	<b>Slide Amount:</b> .22
<b>Breed:</b> Angus & AngusX Cows; Angus Bulls	<b>Variance:</b> Slightly Uneven	<b>Frame:</b> Medium
<b>Bangs:</b> No	<b>Implants:</b> Yes, Ralgro 6/1/2025	<b>Flesh:</b> Medium
<b>Feed:</b> On cow on native high elevation mountain pasture w/free choice salt & mineral		<b>Shrink:</b> 1%
<b>Days Weaned:</b> N/A		<b>Heifers Sell Back of Steers:</b>
<b>Vaccinations:</b> @ Branding - Bovishield Gold One Shot & Ultrabac8; @ Precon - Bovishield Gold One Shot & Ultrabac8		
<b>Weigh Info:</b> Early AM gather out of field, sort from cows, sex, sort for size, load on trucks, haul 30 miles and weigh on the truck w/1% shrink.		
<b>Weigh On:</b> Truck		
<b>Comments:</b> Really nice set of calves with a good sort. Strong and hearty calves with a good reputation.		
<b>Rep:</b> Clint Ward (435) 760-6251		

<b>LOT:</b> 5413	<b>MOON RANCH, LLC</b>	<b>Deliver</b> 10/27/2025 -11/01/2025
65 Steers, 30 Heifers <b>Base Weight:</b> 540/500		<b>Slide Type:</b> 2-way
<b>Location:</b> Hanna, Utah		<b>Weight Stop:</b> 25lb
<b>Color:</b> 95% BLK or BWF, Balance RED, RWF or CHARX	<b>Origin:</b> Home Raised	<b>Slide Amount:</b> .22
<b>Breed:</b> Angus & AngusX Cows; Angus Bulls	<b>Variance:</b> Slightly Uneven	<b>Frame:</b> Medium
<b>Bangs:</b> No	<b>Implants:</b> Yes, Ralgro 6/1/2025	<b>Flesh:</b> Medium
<b>Feed:</b> On cow on native high elevation mountain pasture w/free choice salt & mineral		<b>Shrink:</b> 1%
<b>Days Weaned:</b> N/A		<b>Heifers Sell Back of Steers:</b>
<b>Vaccinations:</b> @ Branding - Bovishield Gold One Shot & Ultrabac8; @ Precon - Bovishield Gold One Shot & Ultrabac8		
<b>Weigh Info:</b> Early AM gather out of field, sort from cows, sex, sort for size, load on trucks, haul 30 miles and weigh on the truck w/1% shrink.		
<b>Weigh On:</b> Truck		
<b>Comments:</b> Really nice set of calves with a good sort. Strong and hearty calves with a good reputation.		
<b>Rep:</b> Clint Ward (435) 760-6251		



<b>LOT:</b> 5414	<b>MILLERBERG LIVESTOCK</b>	<b>Deliver</b> 10/20 -11/10
50 Steer Calves, 40 Heifer Calves <b>Base Weight:</b> 575 str / 560 hfr		<b>Slide Type:</b> 2-way
<b>Location:</b> Randolph, UT. 30 miles North of Evanston, WY		<b>Weight Stop:</b> 25lb
<b>Color:</b> 90% black 10% red	<b>Origin:</b> Home Raised	<b>Slide Amount:</b> .20
<b>Breed:</b> Black Angus and few LimangusX	<b>Variance:</b> Slightly Uneven	<b>Frame:</b> Medium
<b>Bangs:</b> No	<b>Implants:</b> No N/A	<b>Flesh:</b> Medium
<b>Feed:</b> On cows and Native Grass in Meadows		<b>Shrink:</b> 1%
<b>Days Weaned:</b> NA		<b>Heifers Sell Back of Steers:</b> \$20
<b>Vaccinations:</b> Vista Once SQ, Vision 8 w/Spur, Multi Min, Ivermectin at branding and again in fall		
<b>Weigh Info:</b> Early a.m. gather out of pasture, sort off cows, sex and size, load on the trailers and haul 7-8 miles to the scales.		
<b>Weigh On:</b> Ground		
<b>Comments:</b> This is a great of steers and heifers that have been running in native grass pastures and meadow in the Bear River Valley. 70 steers and 70 heifers to sort from.		
<b>Rep:</b> Brian Roundy 435-201-0769		

<b>LOT:</b> 5415	<b>BROKEN S INC</b>	<b>Deliver</b> 10/ 20/25 -10/30/25
90 Steer Calves <b>Base Weight:</b> 575		<b>Slide Type:</b> 2-way
<b>Location:</b> Kemmerer wy + 20		<b>Weight Stop:</b> 25lb
<b>Color:</b> 100 black Bwf	<b>Origin:</b> Home Raised	<b>Slide Amount:</b> .28
<b>Breed:</b> Angus / angus cross luck 7 and Stephenson angus bulls	<b>Variance:</b> Slightly Uneven	<b>Frame:</b> Medium
<b>Bangs:</b> No	<b>Implants:</b> No N/A	<b>Flesh:</b> Medium
<b>Feed:</b> On mom and native pastures		<b>Shrink:</b> 2
<b>Days Weaned:</b> N/A		<b>Heifers Sell Back of Steers:</b>
<b>Vaccinations:</b> Branding, vision once, vision 8 with spur. Boosted 2 weeks before delivery.		
<b>Weigh Info:</b> Gather early morning sort off cow sort for sex sort out of 160head		
<b>Weigh On:</b> Truck		
<b>Comments:</b> Excellent set of home raised owner verified natural calves		
<b>Rep:</b> Brad Jones		

<b>LOT:</b> 5416	<b>DAVE HANSEN</b>	<b>Deliver</b> 12/01/2025 -12/10/2025
90 Weaned Steers <b>Base Weight:</b> 670		<b>Slide Type:</b> 2-way
<b>Location:</b> Mt Pleasant, Utah		<b>Weight Stop:</b> 25lb
<b>Color:</b> 100% Black Hided	<b>Origin:</b> Home Raised	<b>Slide Amount:</b> .16
<b>Breed:</b> 100% Black Angus	<b>Variance:</b> Slightly Uneven	<b>Frame:</b> Medium
<b>Bangs:</b> No	<b>Implants:</b> No N/A	<b>Flesh:</b> Medium
<b>Feed:</b> Meadow pasture. Long Stem alfalfa		<b>Shrink:</b> 2%
<b>Days Weaned:</b> 35 Plus		<b>Heifers Sell Back of Steers:</b>
<b>Vaccinations:</b> 8 - Way, Vira Shield 6, Multi Min, Ivermectin Injectable		
<b>Weigh Info:</b> Early morning sort load on truck haul 10 miles weigh on truck with a 2% shrink		
<b>Weigh On:</b> Truck		
<b>Comments:</b> Fancy set of 1 iron all black weaned steers best sort of 100 head		
<b>Rep:</b> Wayne Cowley 435-979-3725		

<b>LOT:</b> 5417	<b>DAVE HANSEN</b>	<b>Deliver</b> 12/01/2025 -12/10/2025
80 Weaned Heifers <b>Base Weight:</b> 600		<b>Slide Type:</b> 2-way
<b>Location:</b> Mt Pleasant, Utah		<b>Weight Stop:</b> 25lb
<b>Color:</b> 100% Black Hided	<b>Origin:</b> Home Raised	<b>Slide Amount:</b> .16
<b>Breed:</b> 100% Black Angus	<b>Variance:</b> Slightly Uneven	<b>Frame:</b> Medium
<b>Bangs:</b> No	<b>Implants:</b> No N/A	<b>Flesh:</b> Medium
<b>Feed:</b> Meadow pasture. Long Stem alfalfa		<b>Shrink:</b> 2%
<b>Days Weaned:</b> 35 Plus		<b>Heifers Sell Back of Steers:</b>
<b>Vaccinations:</b> 8 - Way, Vira Shield 6, Multi Min, Ivermectin Injectable		
<b>Weigh Info:</b> Early morning sort load on truck haul 10 miles weigh on truck with a 2% shrink		
<b>Weigh On:</b> Truck		
<b>Comments:</b> Fancy set of 1 iron all black weaned Heifers best sort of 100 head		
<b>Rep:</b> Wayne Cowley 435-979-3725		



**LOT:** 5418 **COLOR COUNTRY CATTLE** **Deliver** 12/05 -12/20  
**83 Weaned Steers** **Base Weight:** 590 **Slide Type:** 2-way  
**Location:** Panguitch, Ut 95 miles south of Salina, Ut **Weight Stop:** 25lb  
**Color:** Mostly black and Red and Red **Origin:** Home Raised and Purchased **Slide Amount:** .20  
 balley with a few char, a few with a tick  
 of ear  
**Breed:** Black angus, Red Angus cows, **Variance:** Slightly Uneven **Frame:** Medium  
 Black Angus, Semi Angus Bulls  
**Bangs:** No **Implants:** Yes, Ralgro at weaning 10/1 - **Flesh:** Medium  
 10/10  
**Feed:** alfalfa grass hay mixed with some triticale, 3 way and a little corn **Shrink:** 1%  
**Days Weaned:** 45-60 days **Heifers Sell Back of Steers:** \$0  
**Vaccinations:** Viral Shield 6, 8 way with Somnus, Naslogen v N 3pmh, drenched wormer. Multimin  
**Weigh Info:** Early a.m. gather out of pens sort load on trailers haul 8-10 miles to scales  
**Weigh On:** Ground  
**Comments:** This is a good set of weaned steers. They are from 3 neighboring ranches. They have been given ferapease and  
 BQA certified. There are 110 head of steers to sort from. Can make California legal.  
**Rep:** Brian Roundy 435-201-0769



**LOT:** 5419 **COLOR COUNTRY CATTLE** **Deliver** 11/10 -11/25  
**80 Weaned Heifers** **Base Weight:** 600 **Slide Type:** 2-way  
**Location:** Panguitch, Ut 95 miles south of Salina, Ut **Weight Stop:** 25lb  
**Color:** Mostly black and Red and Red **Origin:** Home Raised and Purchased **Slide Amount:** .20  
 balley with a few char, a few with a tick  
 of ear  
**Breed:** Black angus, Red Angus cows, **Variance:** Slightly Uneven **Frame:** Medium  
 Black Angus, Semi Angus Bulls  
**Bangs:** No **Implants:** No No **Flesh:** Medium  
**Feed:** alfalfa grass hay mixed with some triticale, 3 way and a little corn **Shrink:** 1%  
**Days Weaned:** 45-60 days **Heifers Sell Back of Steers:** \$0  
**Vaccinations:** Viral Shield 6, 8 way with Somnus, Naslogen 3pmh, Valbazen drenched wormer Multimin.  
**Weigh Info:** Early a.m. gather out of pens sort load on trailers haul 8-10 miles to scales  
**Weigh On:** Ground  
**Comments:** This is a good set of weaned heifers. They are from 3 neighboring ranches. They have been given ferapease and  
 BQA certified. There are 110 head of heifers to sort from. Can make California legal.  
**Rep:** Brian Roundy 435-201-0769



**LOT:** 5420 **COLOR COUNTRY CATTLE** **Deliver** 02/20 -03/5  
**60 Steers** **Base Weight:** 825 **Slide Type:** 2-way  
**Location:** Panguitch, Ut 95 miles south of Salina, Ut **Weight Stop:** 25lb  
**Color:** Mostly black and Red and Red **Origin:** Home Raised **Slide Amount:** .12  
 balley with a few Char  
**Breed:** Black angus, Red Angus cows, **Variance:** Slightly Uneven **Frame:** Medium  
 Black Angus, Semi Angus Bulls  
**Bangs:** No **Implants:** Yes, Ralgro 10/1 - 10/10 **Flesh:** Medium  
**Feed:** alfalfa grass hay mixed with some triticale, 3 way and a little corn **Shrink:** 2%  
**Days Weaned:** 75 plus days **Heifers Sell Back of Steers:** \$0  
**Vaccinations:** Virashield 6, Somnus, Injectable Ivermectin and Inforce 3 and Multimin  
**Weigh Info:** Early a.m. gather out of pens sort load on trailers haul 8-10 miles to scales  
**Weigh On:** Ground  
**Comments:** This is a fancy set of steer calves that are ready to go on feed. They are from 3 neighboring ranches. Steers will be  
 loaded on trailers and hauled from 8-10 miles from the feed pens to the scales. Have been given ferapease and BQA  
 certified  
**Rep:** Brian Roundy 435-201-0769





<b>LOT:</b> 5421	<b>XX CATTLE CO</b>	<b>Deliver</b> 9/20 -10/5
64 Steers <b>Base Weight:</b> 850		<b>Slide Type:</b> 2-way
<b>Location:</b> Daniel, Wyoming		<b>Weight Stop:</b> 25lb
<b>Color:</b> 100 % Black hided	<b>Origin:</b> Home Raised	<b>Slide Amount:</b> .10
<b>Breed:</b> Black Angus and Sim Angus cows. Black Angus and Sim Angus bulls.	<b>Variance:</b> Slightly Uneven	<b>Frame:</b> Medium
<b>Bangs:</b> No	<b>Implants:</b> No N/A	<b>Flesh:</b> Medium
<b>Feed:</b> Native grass and meadows		<b>Shrink:</b> 2%
<b>Days Weaned:</b> N/A		<b>Heifers Sell Back of Steers:</b>
<b>Vaccinations:</b> 2 Rounds off Vision 8 Somnus w/Spur, Nasalgen 3 + PMH, Vista BVD, MultiMin and Dectomax injectable.		
<b>Weigh Info:</b> Early a.m. gather out of pastures drive a few miles to corral sort, sex and size then wiegh		
<b>Weigh On:</b> Ground		
<b>Comments:</b> Excellent set of home raised steers out of the Bear River Valley in Randolph,Ut now running in large pastures in Wyoming. These steers should really grow when you put the feed to them. 130 hd to sort from		
<b>Rep:</b> Brian Roundy 435-201-0769		

<b>LOT:</b> 5422	<b>XX CATTLE CO</b>	<b>Deliver</b> 9/20 -10/5
74 Heifers <b>Base Weight:</b> 750		<b>Slide Type:</b> 2-way
<b>Location:</b> Daniel, Wyoming		<b>Weight Stop:</b> 25lb
<b>Color:</b> Mostly all black hided with a few reds.	<b>Origin:</b> Home Raised	<b>Slide Amount:</b> .14
<b>Breed:</b> Black Angus and Sim Angus cows. Black Angus and Sim Angus bulls.	<b>Variance:</b> Slightly Uneven	<b>Frame:</b> Medium
<b>Bangs:</b> No	<b>Implants:</b> No N/A	<b>Flesh:</b> Medium
<b>Feed:</b> Native grass and meadows		<b>Shrink:</b> 2%
<b>Days Weaned:</b> N/A		<b>Heifers Sell Back of Steers:</b>
<b>Vaccinations:</b> 2 Rounds off Vision 8 Somnus w/Spur, Nasalgen 3 + PMH, Vista BVD, MultiMin and Dectomax injectable.		
<b>Weigh Info:</b> Early a.m. gather out of pastures drive a few miles to corral sort, sex and size then wiegh		
<b>Weigh On:</b> Ground		
<b>Comments:</b> Excellent set of home raised heifers out of the Bear River Valley in Randolph,Ut now running in large pastures in Wyoming. These heifers could make replacements or go to feed 120 hd to sort from		
<b>Rep:</b> Brian Roundy 435-201-0769		

<b>LOT:</b> 5423	<b>G &amp; R LIVESTOCK</b>	<b>Deliver</b> 9/1/2025 -9/15/2025
185 Heifers <b>Base Weight:</b> 825		<b>Slide Type:</b> 2-way
<b>Location:</b> Philipsburg Montana		<b>Weight Stop:</b> 25lb
<b>Color:</b> 85% Blk hided, Balance red and char x (very few herefords)	<b>Origin:</b> Purchased	<b>Slide Amount:</b> .12
<b>Breed:</b> Angus and Char cross	<b>Variance:</b> Medium Uneven	<b>Frame:</b> Medium
<b>Bangs:</b> No	<b>Implants:</b> Yes, Synovex	<b>Flesh:</b> Medium
<b>Feed:</b> Light grower ration		<b>Shrink:</b> 3%
<b>Days Weaned:</b> N/A		<b>Heifers Sell Back of Steers:</b>
<b>Vaccinations:</b> Bovi Shield One Shot, 8 way w/Somnus, Ivomec pour on , Valbazen 2 rounds		
<b>Weigh Info:</b> Early morning walk out of pen sort weigh on ground with a 3 shrink		
<b>Weigh On:</b> Ground		
<b>Comments:</b> Really nice set of Heifers with great condition to go on feed best sort of 200 pregged open		
<b>Rep:</b> Wayne Cowley (435) 979-3725 Brian Roundy (435) 201-0769		

<b>LOT:</b> 5424	<b>JA FARMS</b>	<b>Deliver</b> 09/01/2025 -09/15/2025
62 Heifers <b>Base Weight:</b> 830		<b>Slide Type:</b> 2-way
<b>Location:</b> Delta, Utah 70 Miles West of Salina Utah		<b>Weight Stop:</b>
<b>Color:</b> solid Black, few BWF or solid Red,	<b>Origin:</b> Purchased	<b>Slide Amount:</b> .10
<b>Breed:</b> N/A	<b>Variance:</b> Medium Uneven	<b>Frame:</b> Medium
<b>Bangs:</b> No	<b>Implants:</b> No N/A	<b>Flesh:</b> Fleшы
<b>Feed:</b> Alfalfa 15%, Straw 1%, Corn Flakes 12%, DDG 5%, Wheat silage 26%, Corn silage 35%, and mineral pack		<b>Shrink:</b> 3%
<b>Days Weaned:</b> N/A		<b>Heifers Sell Back of Steers:</b>
<b>Vaccinations:</b> Enforce 3, One shot ultra, vision 7 20/20, dectomax, mineral w/rumensin		
<b>Weigh Info:</b> Early am walk from pens, sort and weigh		
<b>Weigh On:</b> Ground		
<b>Comments:</b> best sort out of 70 head, no tags		
<b>Rep:</b> Wayne Cowley 435-979-3725 & Jaden Coates 435-979-6744		



<b>LOT:</b> 5425	<b>ANTON AND KATHI HERMES</b>	<b>Deliver</b> 9-15-25 -10-1-25
110 Open Heifers <b>Base Weight:</b> 900		<b>Slide Type:</b> 2-way
<b>Location:</b> Kirk, CO; 12 miles South		<b>Weight Stop:</b> 25lb
<b>Color:</b> 60 RWF/Hereford 40% BLK/BWF	<b>Origin:</b> Home Raised and Purchased	<b>Slide Amount:</b> .12
<b>Breed:</b> Hereford/ Hereford Cross	<b>Variance:</b> Medium Uneven	<b>Frame:</b> Medium
<b>Bangs:</b> No	<b>Implants:</b> No N/A	<b>Flesh:</b> Medium
<b>Feed:</b> Native Grass/Tubs/Mineral		<b>Shrink:</b> 2%
<b>Days Weaned:</b> N/A		<b>Heifers Sell Back of Steers:</b>
<b>Vaccinations:</b> 2 Round MLV/Multimin/Ivermectin/ Pink Eye/ Foot Rot		
<b>Weigh Info:</b> Early am gather, trail 1-2 miles to pen, sort, load on buyers pre weighed trucks, haul 12 miles to scale, 2% shrink		
<b>Weigh On:</b> Truck		
<b>Comments:</b> Excellent set of heifers that are 90% spayed. They will meet the qualification for Certified Hereford Beef. All the Herefords were purchased off one Nebraska Ranch.		
<b>Rep:</b> Austin Reinick 970-324-3369		



<b>LOT:</b> 5426	<b>ANTON AND KATHI HERMES</b>	<b>Deliver</b> 9-15-25 -10-1-25
110 Open Heifers <b>Base Weight:</b> 920		<b>Slide Type:</b> 2-way
<b>Location:</b> Kirk, CO; 12 miles South		<b>Weight Stop:</b> 25lb
<b>Color:</b> 65% Blk/BWF, 35% Red/RWF	<b>Origin:</b> Home Raised and Purchased	<b>Slide Amount:</b> .12
<b>Breed:</b> Angus/Angus Cross	<b>Variance:</b> Medium Uneven	<b>Frame:</b> Medium
<b>Bangs:</b> No	<b>Implants:</b> No N/A	<b>Flesh:</b> Medium
<b>Feed:</b> Native Grass/Tubs/Mineral		<b>Shrink:</b> 2%
<b>Days Weaned:</b> N/A		<b>Heifers Sell Back of Steers:</b>
<b>Vaccinations:</b> 2 Round MLV/Multimin/Ivermectin/ Pink Eye/ Foot Rot		
<b>Weigh Info:</b> Early am gather, trail 1-2 miles to pen, sort, load on buyers pre weighed trucks, haul 12 miles to scale, 2% shrink		
<b>Weigh On:</b> Truck		
<b>Comments:</b> Nice set of heifers that are 95% spayed. Home raised and purchased from western Nebraska. No Herefords.		
<b>Rep:</b> Austin Reinick 970-324-3369		



# Thank you!



WE WANT TO EXTEND OUT HEARTFELT THANKS TO ALL THE BUYERS AND CONSIGNORS WHO DO BUSINESS WITH US. YOUR TRUST MEANS EVERYTHING TO US AND WE PRIDE OURSELVES ON HAVING YOUR BEST INTEREST IN MIND. THANK YOU FOR SUPPORTING OUR LAMB AND CALF SPECTACULAR IN SALT LAKE CITY UTAH. WE WISH YOU ALL THE BEST AND CAN'T WAIT TO SEE YOU NEXT TIME.